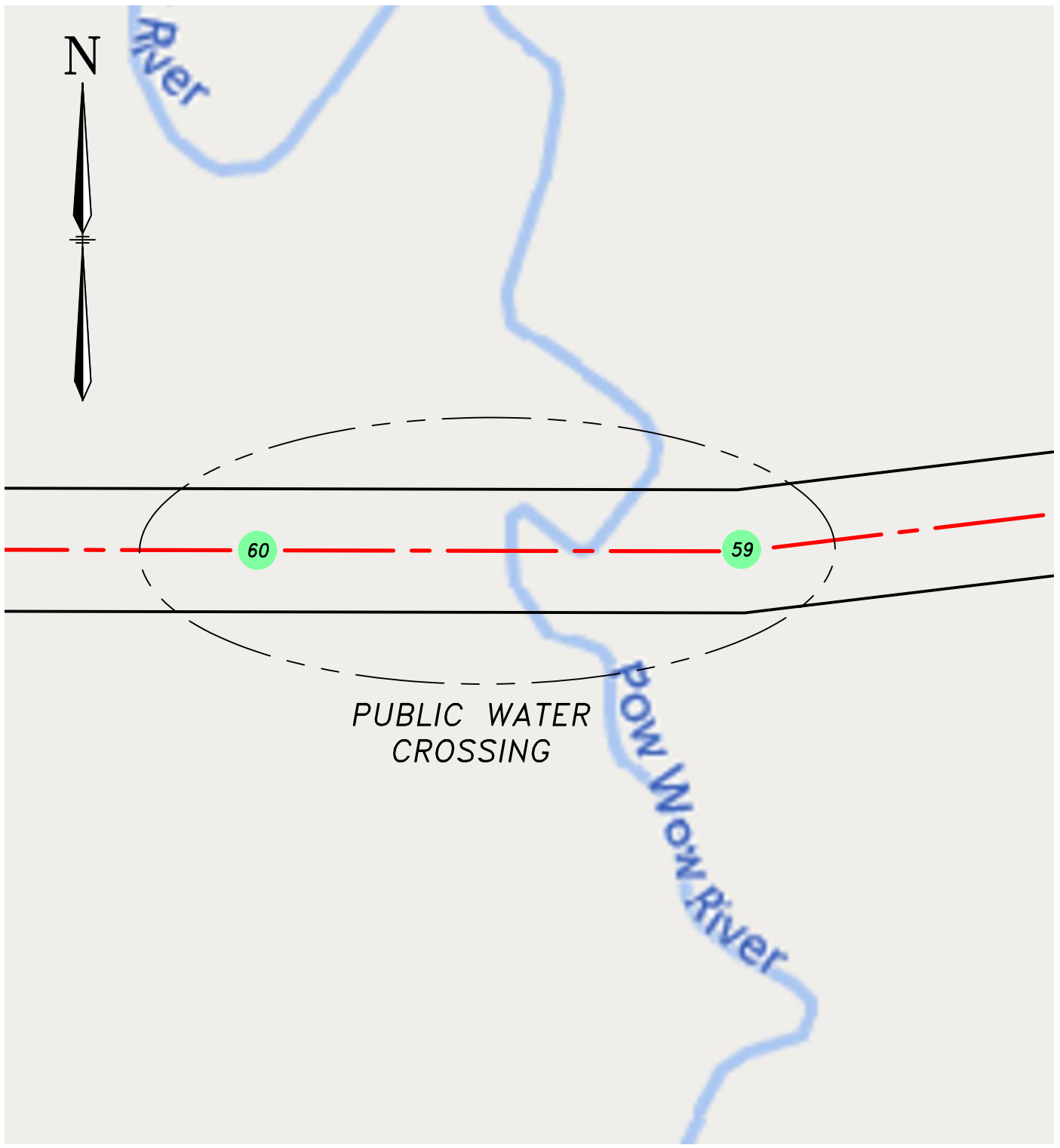


3/14/2024 8:21 AM - spensct - N:\ADEPT WORK AREA\NH WORK AREA\SPENSCT\345KV STRUCTURE DETA...04303-81001.dwg - EXHIBIT 1 (WATERCROSSING)/2016



**LEGEND:**

- 363 LINE:
- 363 STR:

DWG REV	EPN/DESCRIPTION	CONT/PE#	DATE	DRN	CHKD	APPR
2	RE-ISSUED TO NHDOE (TN22NN)		3/14/24	CTS	SAC	CJT
1	ISSUED TO NHDOE (TN22NN)		9/8/23	CTS	SAC	CJT

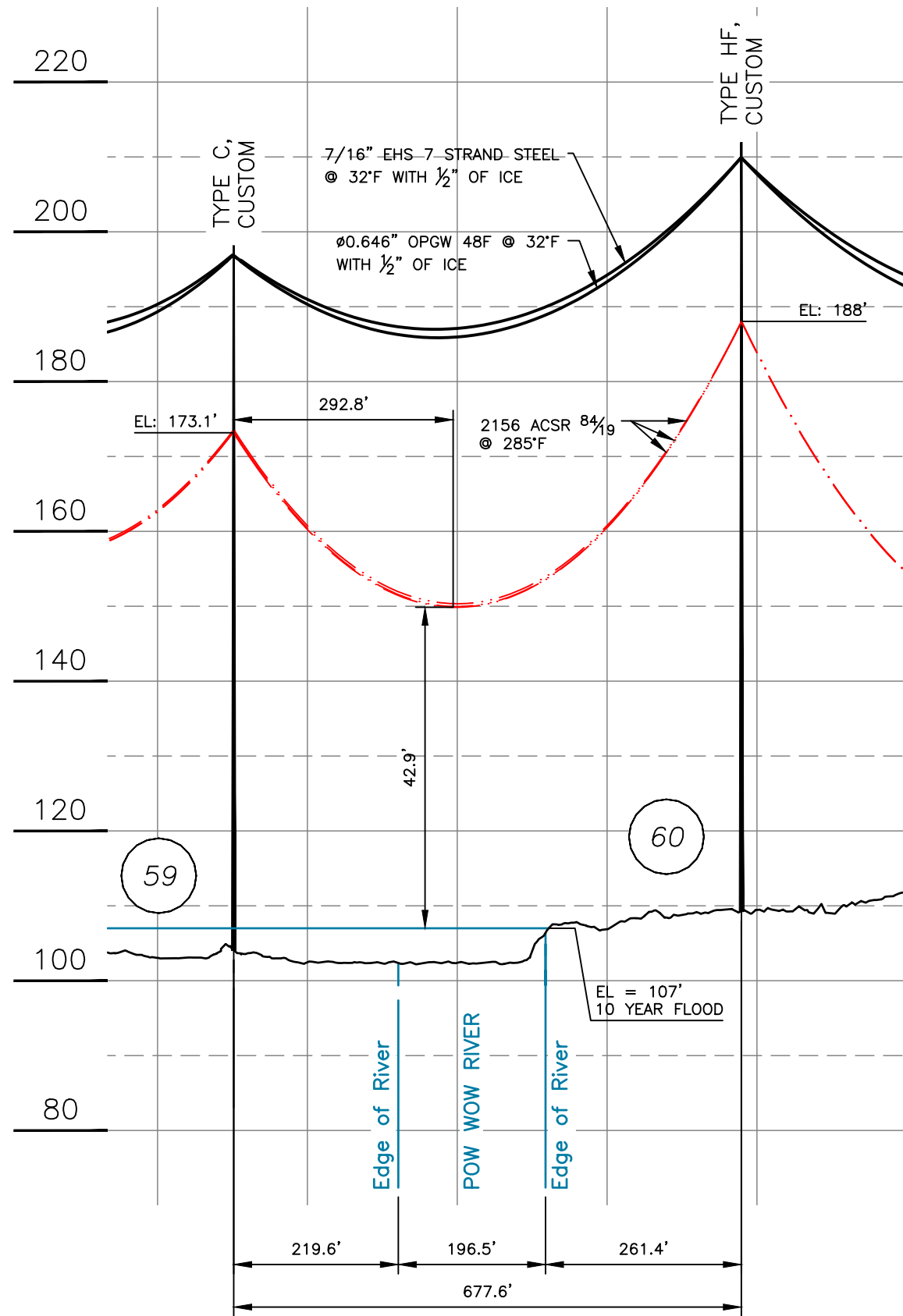


363, 345kV LINE  
PUBLIC WATERBODY CROSSING, LOCATION PLAN  
KINGSTON, NEW HAMPSHIRE  
EXHIBIT 1

T	2
DRAWN CTS	
ENGINEER CJT	
CHECKED SAC	
APPROVED CJT	
DATE 9/8/23	

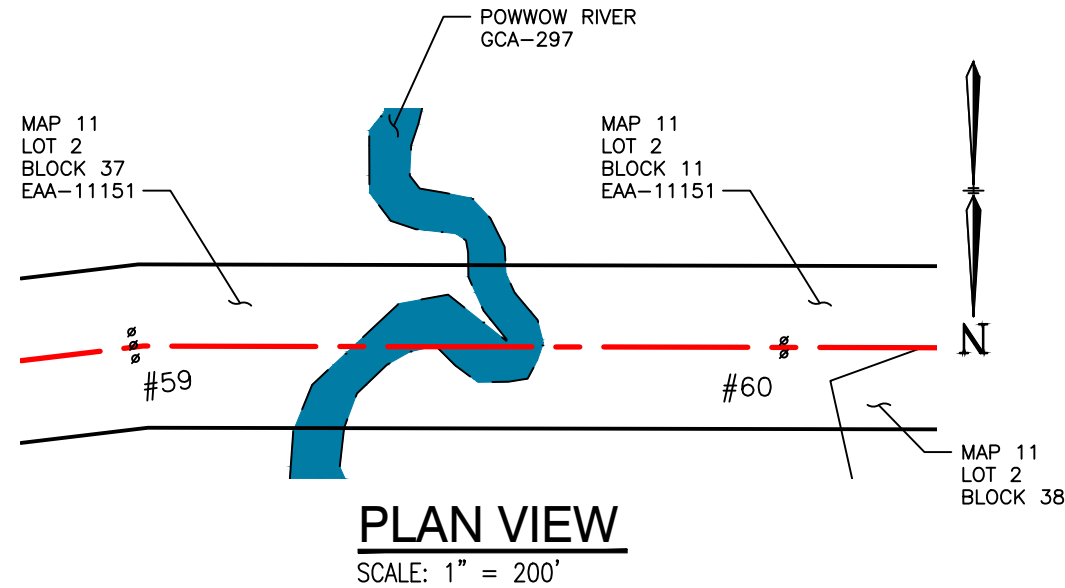
SCALE 1" = 200'	FILE: 04303-81001.DWG IMAGE:	DRAWING NO. 04303-81001
--------------------	---------------------------------	----------------------------

3/14/2024 8:21 AM - spensct - N:\Adept WORK AREA\NH WORK AREA\SPENSCT\345KV STRUCTURE DETAIL\04303-81001.dwg - EXHIBIT 2 (WATERCROSSING)/2016



**PROFILE VIEW**

SCALE: HORZ 1" = 200'  
VERT 1" = 20'



**PLAN VIEW**

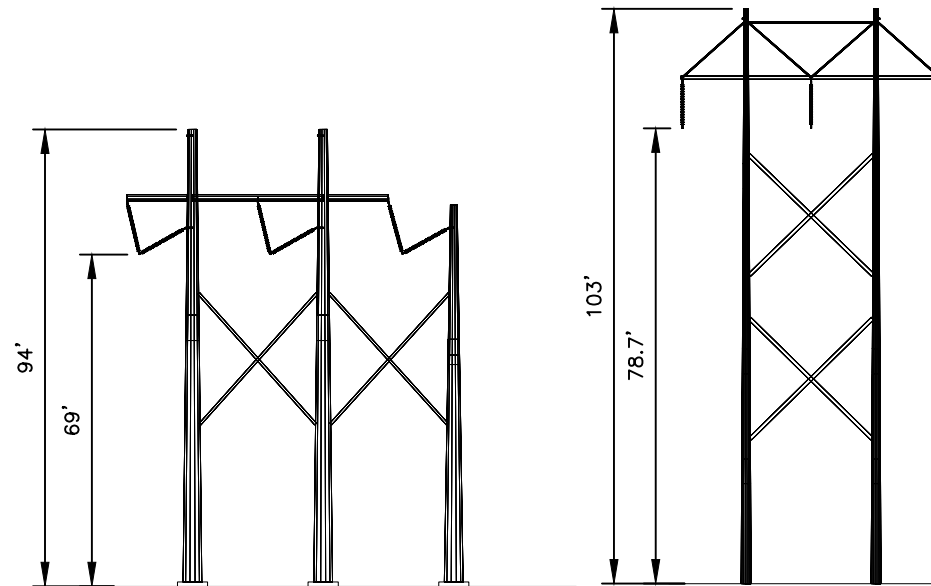
SCALE: 1" = 200'

**LEGEND:**

- #59 STRUCTURE (WITH GUYS)
- PROPERTY BOUNDARY
- 363 LINE 345kV LINE, C OF CONSTRUCTION
- LIMITS OF EVERSOURCE RIGHT OF WAY
- WATERBODY

STRUCTURE LOCATION		
STRUCTURE	LONGITUDE	LATITUDE
59	-71.00929145	42.90124896
60	-71.01182474	42.90129667

NESC VERTICAL CLEARANCE (FT) FROM TABLE 232.1, C2-2012	
NATURE OF SURFACE UNDERNEATH WIRES, CONDUCTORS OR CABLES	345kV
WATER AREAS NOT SUITABLE FOR SAIL BOATING OR WHERE SAIL BOATING IS PROHIBITED	23.0



STRUCTURE 59  
TYPE C CUSTOM

STR 59: IS AN EVERSOURCE TYPE C CUSTOM, SINGLE CIRCUIT STEEL POLE RUNNING ANGLE, HORIZONTAL CONFIG.

STRUCTURE 60  
TYPE HF

STR 60: IS AN EVERSOURCE TYPE HF, SINGLE CIRCUIT STEEL POLE TANGENT, HORIZONTAL CONFIG.

**STRUCTURE DETAIL**

SCALE: NTS

CABLE SCHEDULE						
WIRE	QTY OF CABLES	DESCRIPTION	DESIGN CONDITIONS			
			MAX DESIGN TENSION (lb)	TEMP (°F)	ICE (in)	WIND (psf)
CONDUCTOR	6	ACSR, 2156 kcmil 84/19, Bluebird	10500	0	0.5	4
STATIC	1	7/16" EHS 7 Strand Steel	3200	0	0.5	4
OPGW	1	48F Ø0.646 BRUGG	3700	0	0.5	4

**NOTES:**

- PARCEL INFORMATION PROVIDED BY NH GRANIT.
- ELEVATIONS REFERENCED TO THE NORTH AMERICAN VERTICAL DATUM OF 1988.
- FEMA FLOOD INFORMATION NOT AVAILABLE FOR THIS LOCATION. THE 10 YEAR FLOOD ELEVATION UTILIZED IS REFERENCED FROM THE PREVIOUS CROSSING LICENSE ORDER NO. 25,493 (DE 13-015)

<p>363, 345kV LINE POWWOW RIVER, PUBLIC WATER CROSSING EAST KINGSTON, NEW HAMPSHIRE EXHIBIT 2</p>	T 2
	DRAWN CTS
	ENGINEER CJT
	CHECKED SAC
	APPROVED CJT
DATE 9/8/23	DRAWING NO. 04303-81001
SCALE AS SHOWN	FILE: 04303-81001.DWG IMAGE:

DWG REV	EPN/DESCRIPTION	CONT/PE#	DATE	DRN	CHKD	APPR
2	RE-ISSUED TO NHDOE (TN22NN)		3/14/24	CTS	SAC	CJT
1	ISSUED TO NHDOE (TN22NN)		9/8/23	CTS	SAC	CJT