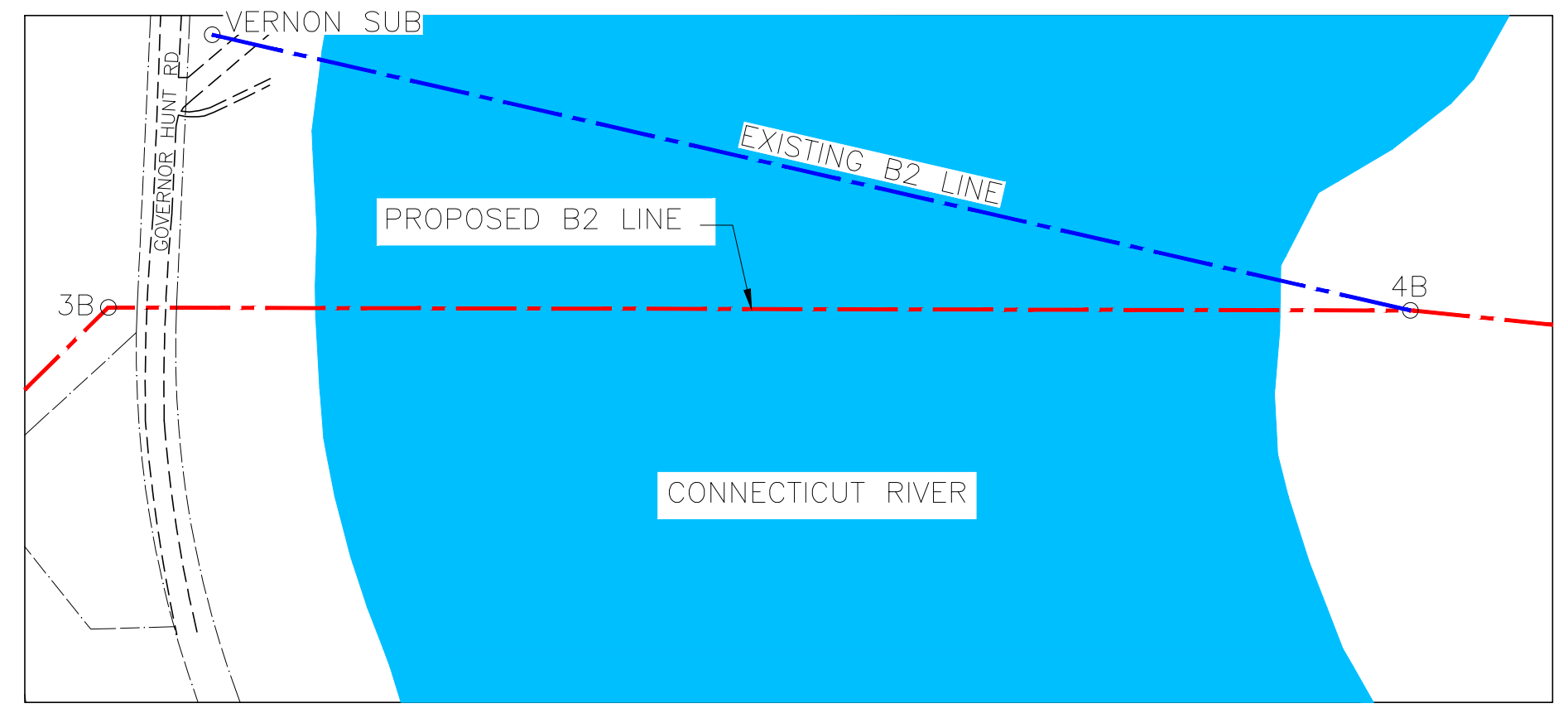
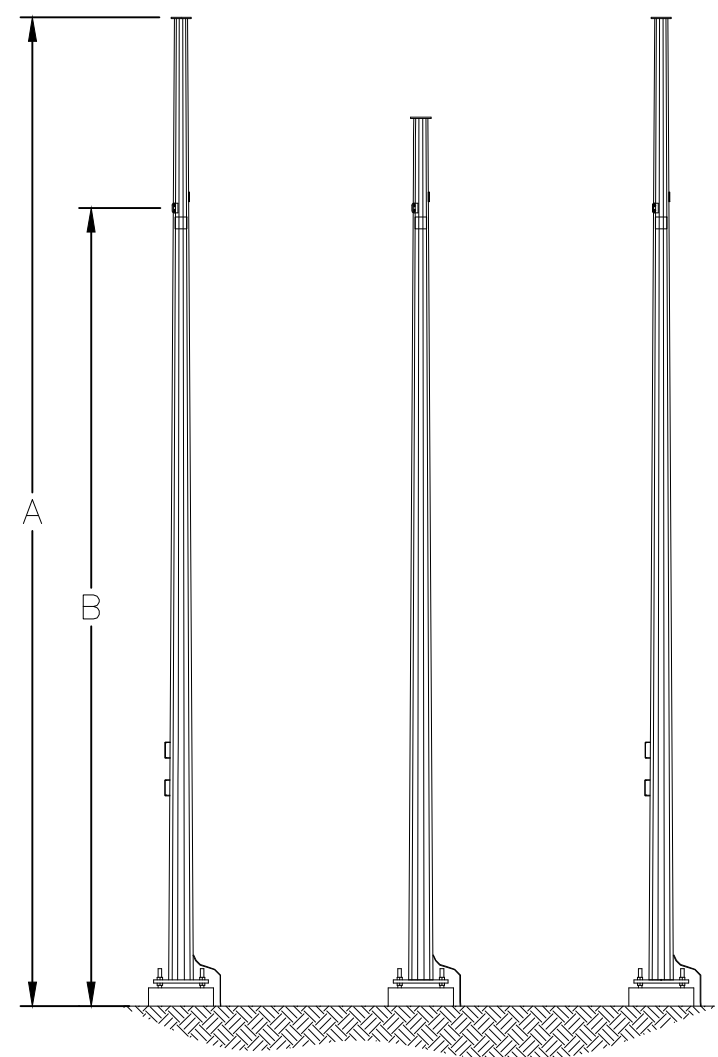


Exhibit 2

- NOTES:
- ELEVATIONS REFERENCED TO THE NORTH AMERICAN VERTICAL DATUM OF 1988.
 - 100 YEAR FLOOD ELEVATION FROM THE FEMA FLOOD MAP SERVICE CENTER, NATIONAL FLOOD HAZARD LAYER FIRMETTE, 5/23/2006.



PLAN VIEW
SCALE: HORZ 1" = 200'



STRUCTURES 3B & 4B
STEEL POLE
STRUCTURES 3B & 4B: ARE NATIONAL GRID 3 POLE SINGLE CIRCUIT STEEL, HORIZONTAL CONFIG.

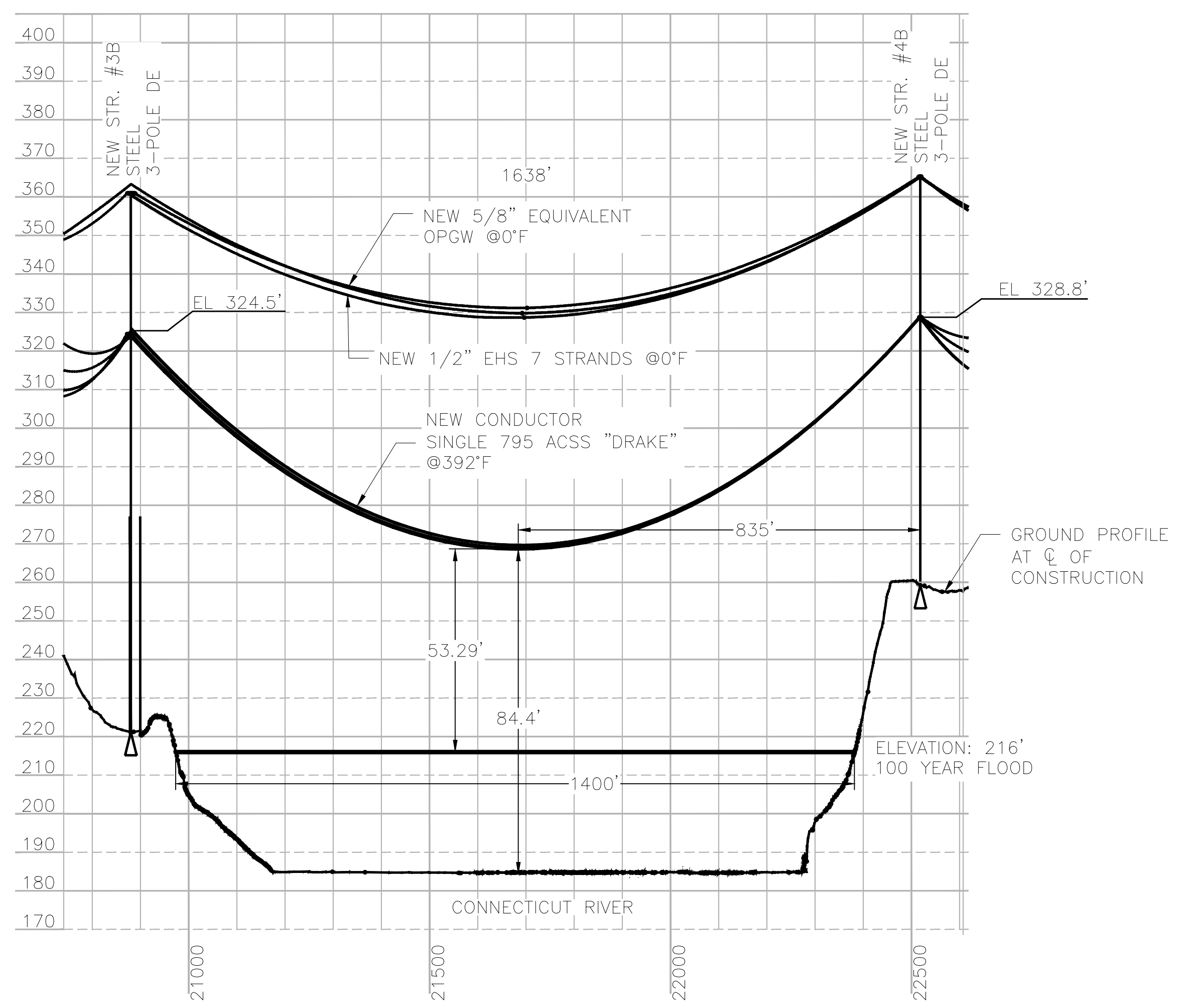
- LEGEND:
- PROPERTY BOUNDARY
 - - - B2 LINE--PROPOSED
 - - - ROAD
 - █ WATERBODY
 - STRUCTURE
 - - - B2 LINE--EXISTING

STRUCTURE LOCATION		
STRUCTURE	LONGITUDE	LATITUDE
3B	-72.51704053	42.77025854
4B	-72.51162621	42.76818645

STRUCTURE DETAILS					
STRUCTURE	TYPE	MATERIAL	A(FT)	B(FT)	
3B	SC 3-POLE DE	STEEL	140	103.8	
4B	SC 3-POLE DE	STEEL	105	68.5	

STRUCTURE DETAIL
SCALE: NTS

NESC VERTICAL CLEARANCE (FT) FROM TABLE 232-1, C2 2023, NESC 2023	
NATURE OF SURFACE UNDERNEATH WIRES, CONDUCTORS OR CABLES	115 kV (ft)
WATER AREAS SUITABLE FOR ALL BOATING INCLUDING LAKES, PONDS, RESERVOIRS, TIDAL WATERS, RIVERS, STREAMS, AND CANALS WITH AN UNOBSTRUCTED SURFACE AREA OF OVER 200 TO 2000 ACRES	36.1
OTHER AREAS TRAVERSED BY VEHICLES, SUCH AS CULTIVATED, GRAZING, FOREST, AND ORCHARD LANDS, INDUSTRIAL SITES, COMMERCIAL SITES, ETC	20.1



PROFILE VIEW
SCALE: HORZ 1" = 200'
VERT 1" = 25'

CABLE SCHEDULE						
WIRE	QTY OF CABLES	DESCRIPTION	DESIGN CONDITION			
			MAX DESIGN TENSION (lb)	TEMP (' F)	ICE (in)	WIND (psf)
CONDUCTOR	3	795 kcmil 26/7 Strands DRAKE ACSS HS285	16300	0	0.5	4
STATIC	1	1/2" EHS 7 Strands	12000	0	0.5	4
OPGW	1	5/8" EQUIVALENT OPGW	15000	0	0.5	4

CONFIDENTIALITY STATEMENT: THIS DOCUMENT CONTAINS CONFIDENTIAL AND PROPRIETARY INFORMATION OF NATIONAL GRID. IT IS TO BE USED BY AUTHORIZED CONTRACTORS FOR NATIONAL GRID SOLELY IN CONNECTION WITH THE SPECIFIC PROJECT FOR WHICH IT HAS BEEN TRANSMITTED. ANY OTHER USE, ITS REPRODUCTION WITHOUT PRIOR EXPRESS WRITTEN AUTHORIZATION OF NATIONAL GRID IS STRICTLY PROHIBITED.

PREPARED BY: ZFM 06/07/23
 REVIEWED BY: CJR 06/07/23
 APPROVED BY: CJR 06/07/23
 SCALE: NTS
 SHEET: 1
 INDEX: 900008

CONNECTICUT RIVER CROSSING APPLICATION
 B2 VERNON - CRYSTAL LAKE

nationalgrid
 New England Power Company

VER 1 06/07/23 ISSUED FOR REVIEW
 PREPARED BY: ZFM CJR CJR
 VERSION DESCRIPTION: 1

PRINTED COPIES ARE NOT DOCUMENT CONTROLLED. FOR THE LATEST AUTHORIZED VERSION PLEASE REFER TO THE ENGINEERING DEPARTMENT DOCUMENTS CABINET IN DOCUMENTUM
 PRINTED 8/30/2023 7:15 PM