

LEGEND

- 36 LINE: —
- 36 STRUCTURE: 3



36 LINE
MERRIMACK RIVER, PUBLIC WATER CROSSING
CONCORD, NEW HAMPSHIRE
EXHIBIT 1

T	1
DRAWN	JT
ENGINEER	NG
CHECKED	NG
APPROVED	NG
DATE	5/5/2023

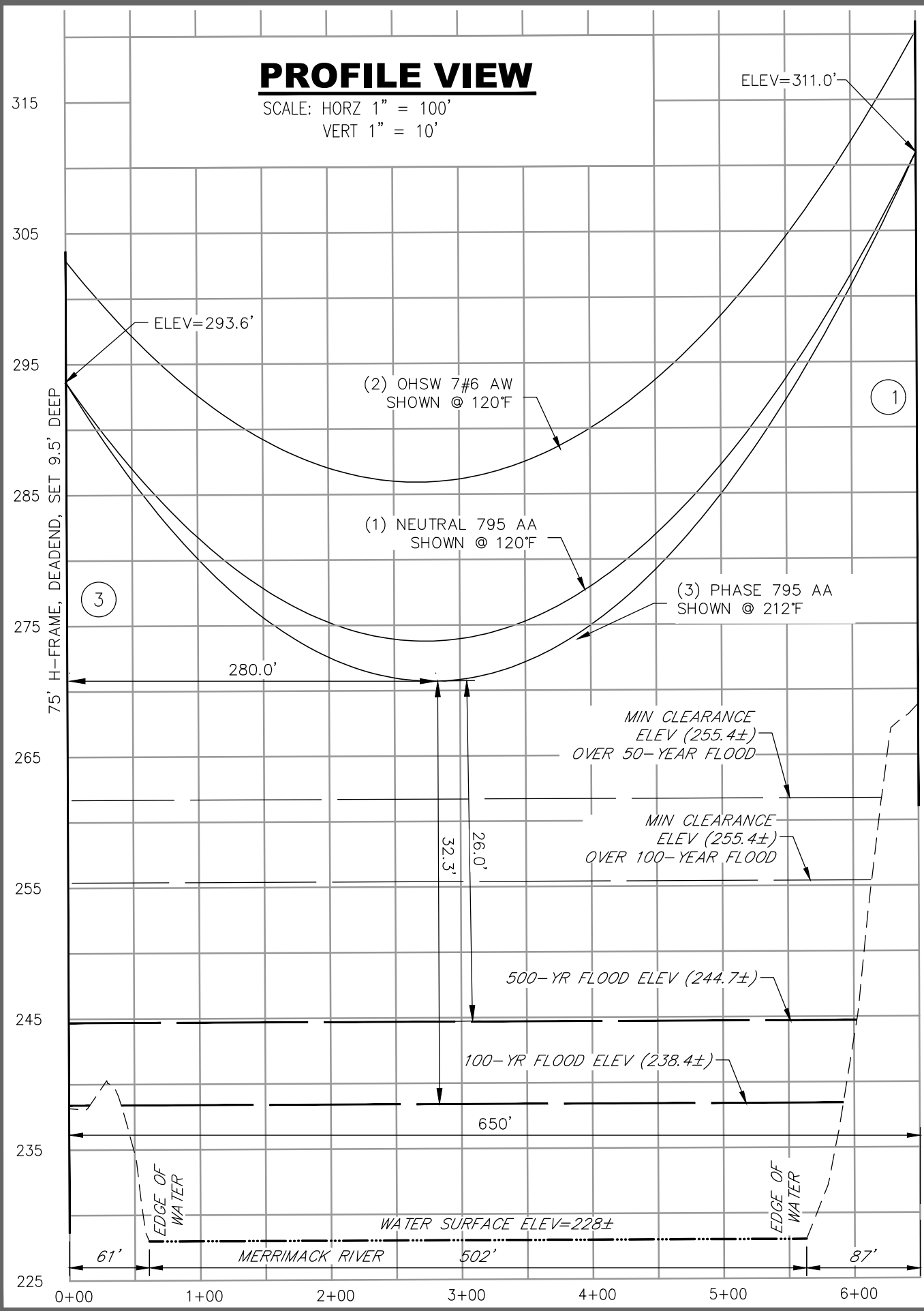
DWG REV	EPN/DESCRIPTION	CONT/PE#	DATE	DRN	CHKD	APPR

SCALE: 1" = 1,000'
FILE: 96051-02 DOE PLANS - LINES 36 AND 38.DWG
DRAWING NO.

5/26/2023 3:50 PM - Jbelanger - F:\TFM Projects\96051 - Concord, NH\96051-02 Unitil - Lines 36 And 38.dwg - Lines 36 And 38.dwg - LINE 36

PROFILE VIEW

SCALE: HORIZ 1" = 100'
VERT 1" = 10'



NOTES

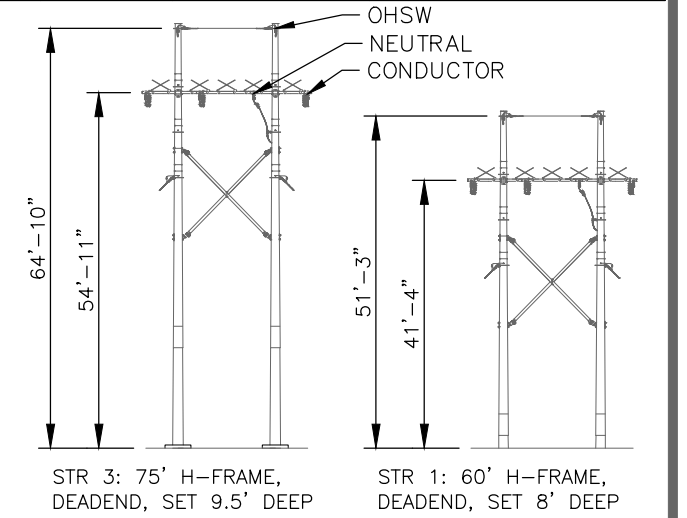
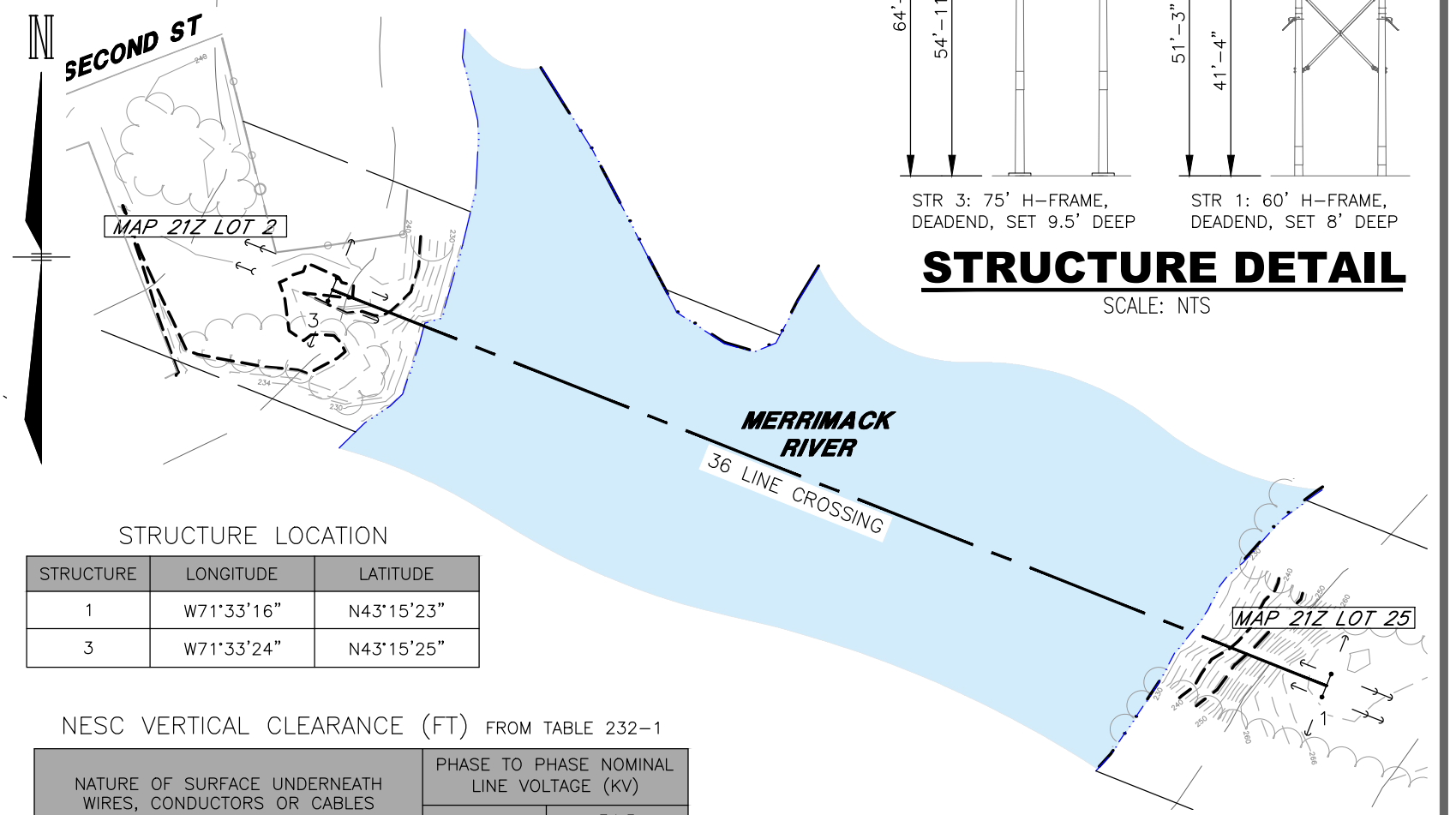
1. MINIMUM AND MAXIMUM SAG CALCULATIONS PROVIDED BY UNITIL.
2. EXISTING INFORMATION PROVIDED BY FIELD SURVEY CONDUCTED BY TF BERNIER, INC. IN SEPTEMBER 2019.
3. ELEVATIONS REFERENCED TO THE NORTH AMERICAN VERTICAL DATUM OF 1988.
4. ZONE AE FLOOD ELEVATION FROM THE FEMA FLOOD MAP SERVICE CENTER, NATIONAL FLOOD HAZARD MAP 33013C0343E, EFFECTIVE DATE 4/19/2010.

CABLE SCHEDULE

NEW WIRE	# OF CABLES	TYPE	DIA (IN.)	WEIGHT/1000 FT	CABLE STRENGTH (LBS.)	DESIGN TENSION @ NESC HEAVY, INITIAL (LBS.)
OHSW	2	7 NO 6 ALUMOWELD	0.486	416	22,730	3,200
CONDUCTOR	3	795 KCMIL 37/0 AAC	1.026	746	13,900	5,000
NEUTRAL	1	795 KCMIL 37/0 AAC	1.026	746	13,900	5,000

PLAN VIEW

SCALE: 1" = 100'



STRUCTURE DETAIL

SCALE: NTS

STRUCTURE LOCATION

STRUCTURE	LONGITUDE	LATITUDE
1	W71°33'16"	N43°15'23"
3	W71°33'24"	N43°15'25"

NESC VERTICAL CLEARANCE (FT) FROM TABLE 232-1

NATURE OF SURFACE UNDERNEATH WIRES, CONDUCTORS OR CABLES	PHASE TO PHASE NOMINAL LINE VOLTAGE (KV)	
	NEUTRAL	34.5
WATER AREAS SUITABLE FOR SAILBOATING INCLUDING LAKES, PONDS, RESERVOIRS, TIDAL WATERS, RIVERS, STREAMS, AND CANALS WITH AN UNOBSTRUCTED SURFACE AREA OF LESS THAN 20 AC	17.5'	20.5'

T 1

DRAWN JT

ENGINEER NG

CHECKED NG

APPROVED NG

DATE 5/26/2023

36 LINE
MERRIMACK RIVER, PUBLIC WATER CROSSING
CONCORD, NEW HAMPSHIRE
EXHIBIT 2

DWG REV

EPN/DESCRIPTION

CONT/PE#

DATE

DRN

CHKD

APPR

SCALE AS NOTED

FILE: 96051-02 DOE PLANS - LINES 36 AND 38.DWG

DRAWING NO.

LINE #35 - SEWALLS FALLS CROSSING # 03

INFORMATION

CROSSING: Body Of Water is : Merrimack River - Concord

POLES: CEC. # 3-A,B,C, Map # Trans.:CDT35P12

From: CEC #3-ABC TEL.: no CATV no Fire no

To: CEC #1-ABC TEL.: no CATV no Fire no

Size/CI #33-Remarks Installed Dec 1986, Joint no

Size/CI #1-Remarks Installed Dec 1986, Joint no

CONDUCTORS: Electric

Primary: 3-556 ACSR, Sec'dy: no, Neut: 2-336.4 ACSR

Voltage: Primary 34.5 Kv., Secondary -

PUC: Docket # D-E4054, Order # 7907, Item 4, Date 10/18/62

CLEARANCES: (Above Mean Water Level)

Primary Elec.: 50 Ft., Neutral: 45 Ft., Secdy.: - Ft.

Annual High Water above mean is 6 Ft.

NESC Min. Clearance to \emptyset 17 Ft, To Neutral 14 Ft.

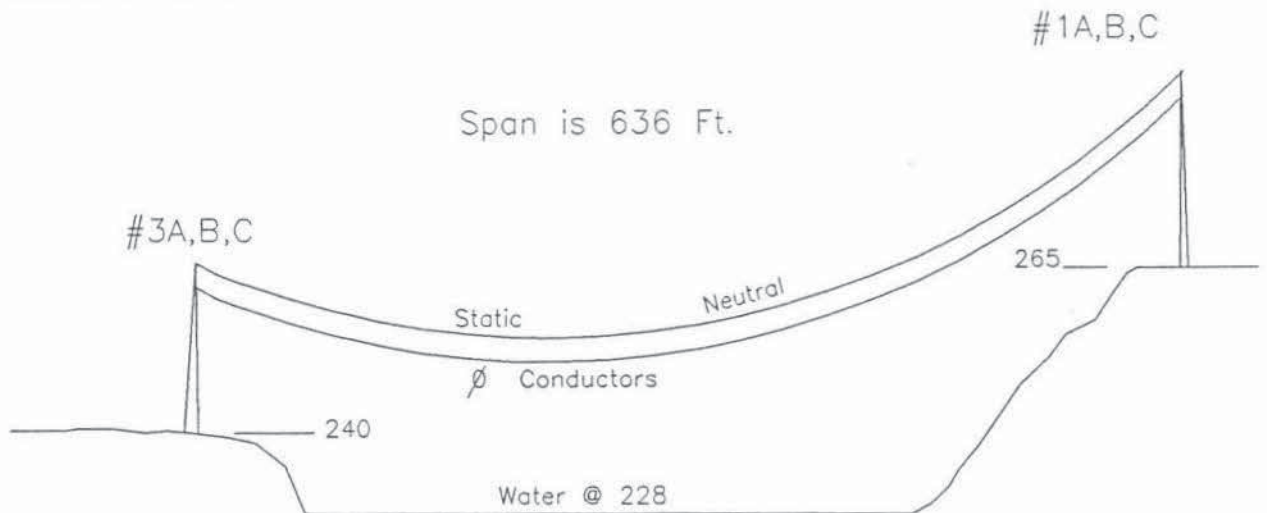
NESC. Refr.: Nature of Surface: 232-1-6 = 17 Ft.

REMARKS #3ABC is a 60', 55', 60' #1ABC is a 55', 50', 55'

Actual Crossing is Downstream Approx. 200 Ft. From Original.

Not Suitable for Sailing

CROSSING PROFILE



View of Crossing is Looking North

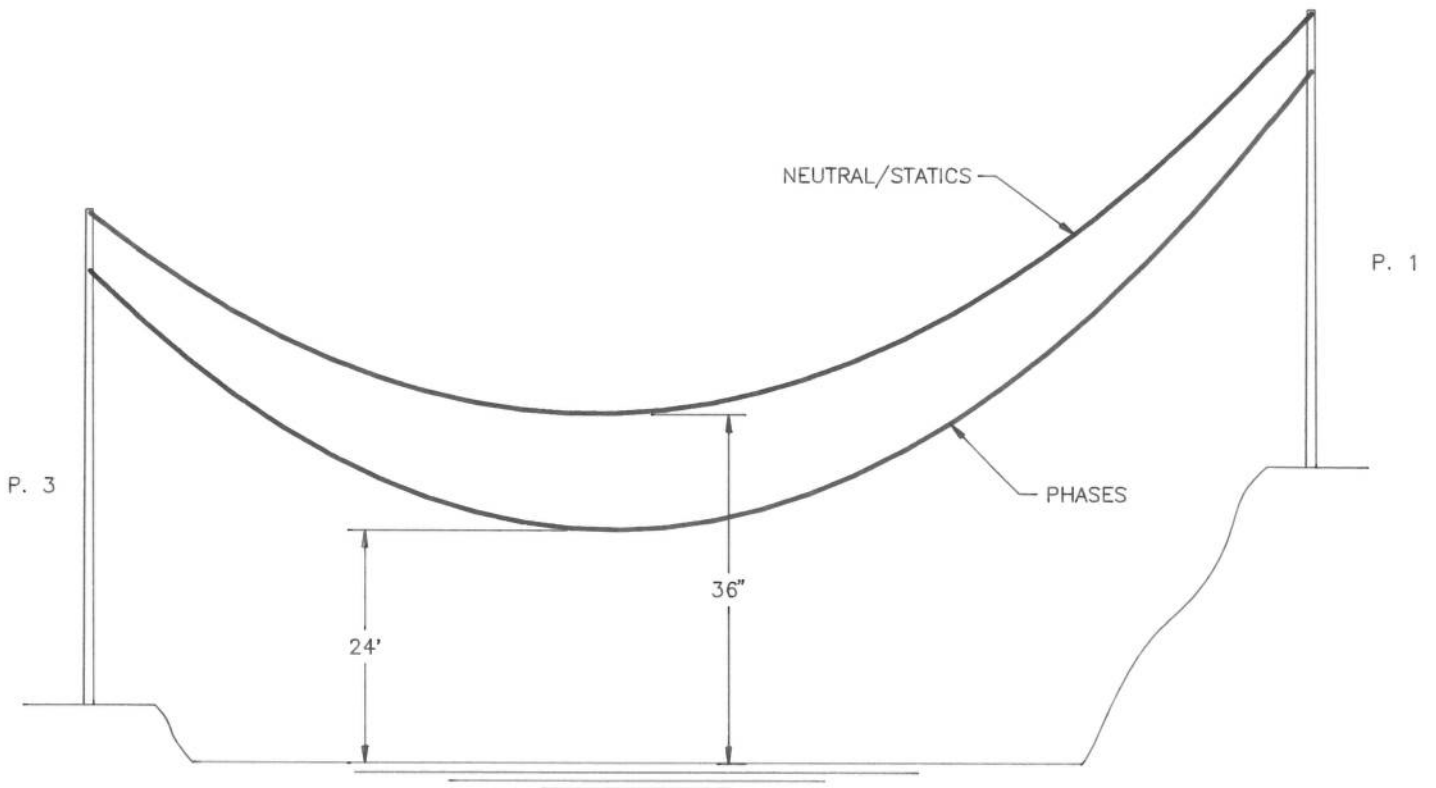
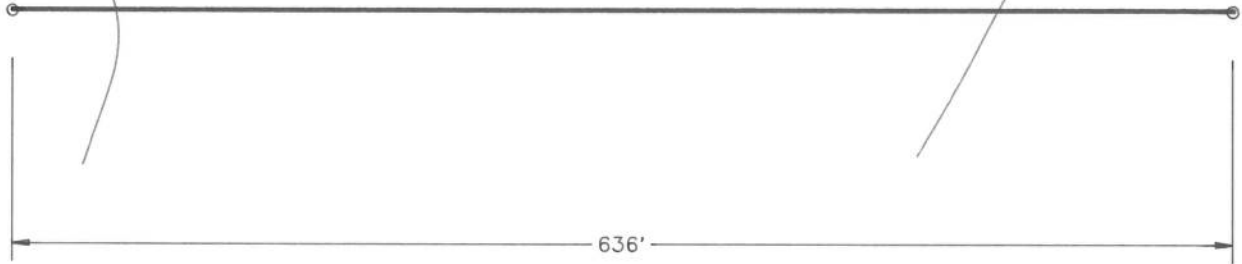
Not To Scale

DWG. DATE 01/21/92
 INSP. 01/07/92
 ENG'G.

WATER CROSSINGS
 CONCORD ELECTRIC COMPANY, CONCORD, N.H. 03301

		R.A.S.
REV. DATE		

MERRIMACK RIVER



SCALE:
 HORIZ. 1" = 100'
 VERT. 1" = 20'

DESIGN CRITERIA

1. 336.4 ACSR "MERLIN" NEUTRAL/STATICS
2. 556.5 ACSR "OSPREY" PHASES
3. 3000# MAX. TENSION
4. MAX. FINAL SAG @ 212°F

CONCORD ELECTRIC CO. CONCORD, N.H.

TRANSMISSION
 WATER CROSSING #03
 MERRIMACK RIVER - CONCORD

REV.	DESCRIPTION	BY	DATE	CHK	APR
REVISIONS					

DRAWN

 CHECKED

 APPROVED


SCALE	DATE	SHEET	DRAWING NO.
AS NOTED	2/22/93	1 OF 6	CAT35P13