

LEGEND:

- 0161 LINE: - - -
- 0161 STR: 72

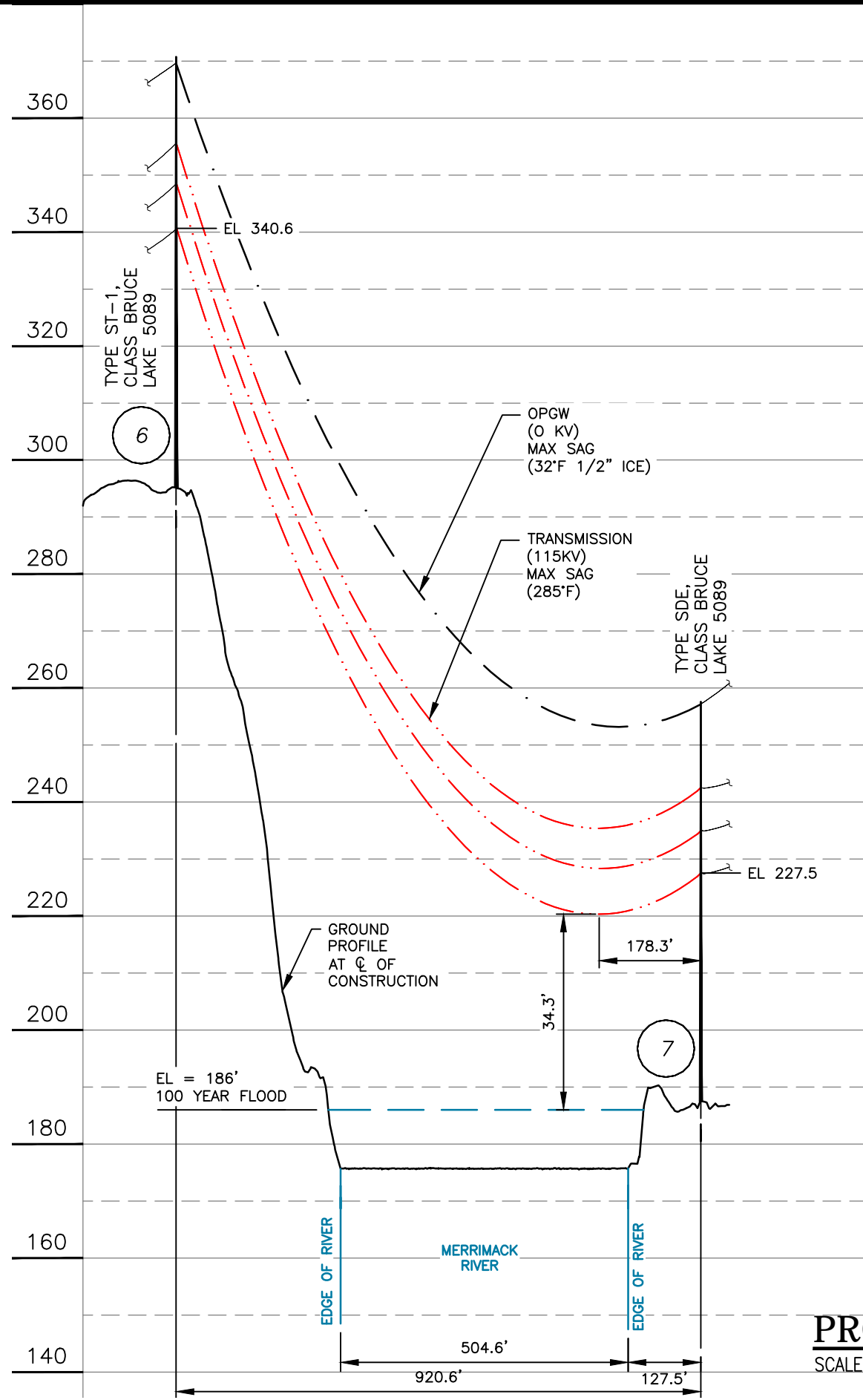
| | | | | | | |
|---------|---------------------|----------|------|-----|------|------|
| 1 | SUBMITTED TO NH PUC | 08/21 | GEB | DWW | APS | |
| DWG REV | EPN/DESCRIPTION | CONT/PE# | DATE | DRN | CHKD | APPR |

EVERSOURCE ENERGY

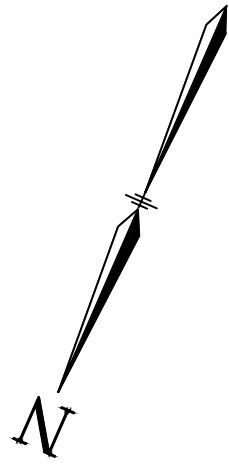
0161, 115kV LINE
 STATE OWNED LAND AND WATERBODY CROSSING, LOCATION PLAN
 HOOKSETT, MANCHESTER, GOFFSTOWN,
 NEW HAMPSHIRE
 EXHIBIT 1

| | |
|--------------------|---|
| T | 1 |
| DRAWN GEB | |
| ENGINEER RSN | |
| CHECKED DWW | |
| APPROVED APS | |
| DATE 08/23/2021 | |

| | | |
|---------------------|-------------------------------|---------------------------------|
| SCALE 1" = 5000' | FILE: 016143501.DWG IMAGE: | DRAWING NO. 016143501 |
|---------------------|-------------------------------|---------------------------------|

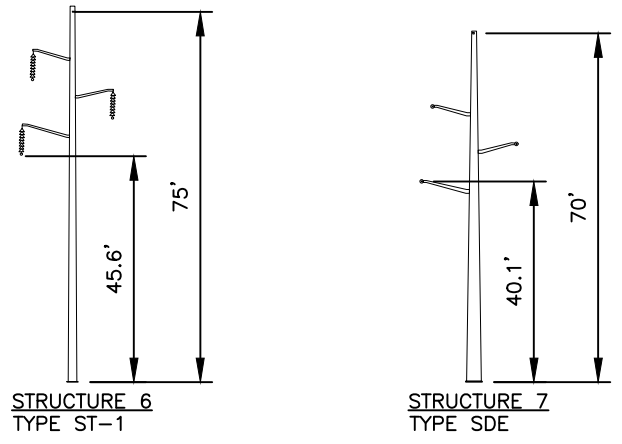


PROFILE VIEW
SCALE: HORZ 1" = 250'
VERT 1" = 25'



LEGEND:

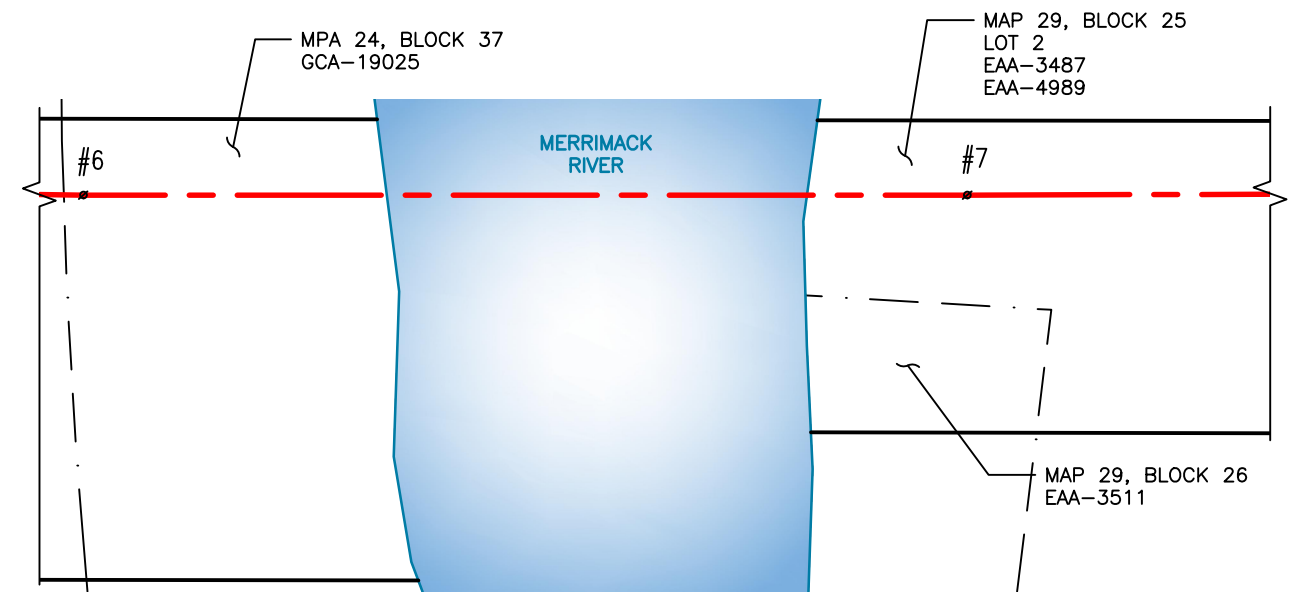
- #21 STRUCTURE
- PROPERTY BOUNDARY
- 0161 LINE 115KV LINE, ϕ OF CONSTRUCTION
- LIMITS OF EVERSOURCE RIGHT OF WAY
- PUBLIC WATERBODY



STR 6: IS A EVERSOURCE TYPE ST-1, SINGLE CIRCUIT STEEL POLE TANGENT, DELTA CONFIGURATION.
STR 7: IS A EVERSOURCE TYPE SDE, SINGLE CIRCUIT STEEL POLE TANGENT, DELTA CONFIGURATION.

STRUCTURE DETAIL

SCALE: NTS



PLAN VIEW

SCALE: 1" = 200'

| STRUCTURE LOCATION | | |
|--------------------|--------------|-------------|
| STRUCTURE | LONGITUDE | LATITUDE |
| 6 | -71.45183454 | 43.05352610 |
| 7 | -71.45499502 | 43.05252242 |

| NESC VERTICAL CLEARANCE (FT) | |
|--|-------|
| NATURE OF SURFACE UNDERNEATH WIRES, CONDUCTORS OR CABLES | 115kV |
| WATER AREAS SUITABLE FOR SAIL BOATING INCLUDING LAKES, PONDS, RESERVOIRS, TIDAL WATERS, RIVERS, STREAMS, AND CANALS WITH AN UNOBSTRUCTED SURFACE AREA OVER 20 TO 200 ACRES | 30.1 |

| CABLE SCHEDULE | | | | | | |
|--------------------|---------------|---------------------------|--------------------------|-----------|----------|------------|
| WIRE | QTY OF CABLES | DESCRIPTION | DESIGN CONDITIONS | | | |
| | | | MAX DESIGN TENSION (LBS) | TEMP (°F) | ICE (IN) | WIND (PSF) |
| OPGW | 1 | 144 FIBER OPGW | 4500 | 0 | 0.5 | 4 |
| TRANSMISSION COND. | 3 | 795 KCMIL ACSR 26/7 DRAKE | 8000 | 0 | 0.5 | 4 |

- NOTES:**
- GROUND ELEVATION PROFILE DETERMINED USING INFORMATION FROM LIDAR SURVEY.
 - VERTICAL DATUM IS NAVD88 IN FEET.
 - 100-YEAR FLOOD ELEVATION FROM THE FEMA FLOOD MAP SERVICE CENTER, NATIONAL FLOOD HAZARD LAYER FIRMETTE, 04/19/2010.
 - THE 0161 LINE WAS BUILT PRIOR TO THE MERRIMACK RIVER BEING REGULATED UNDER US. ARMY CORPS OF ENGINEERS, SECTION 10. THERE WILL BE NO CHANGE IN WIRE LINE CLEARANCE FROM THE WATERBODY.

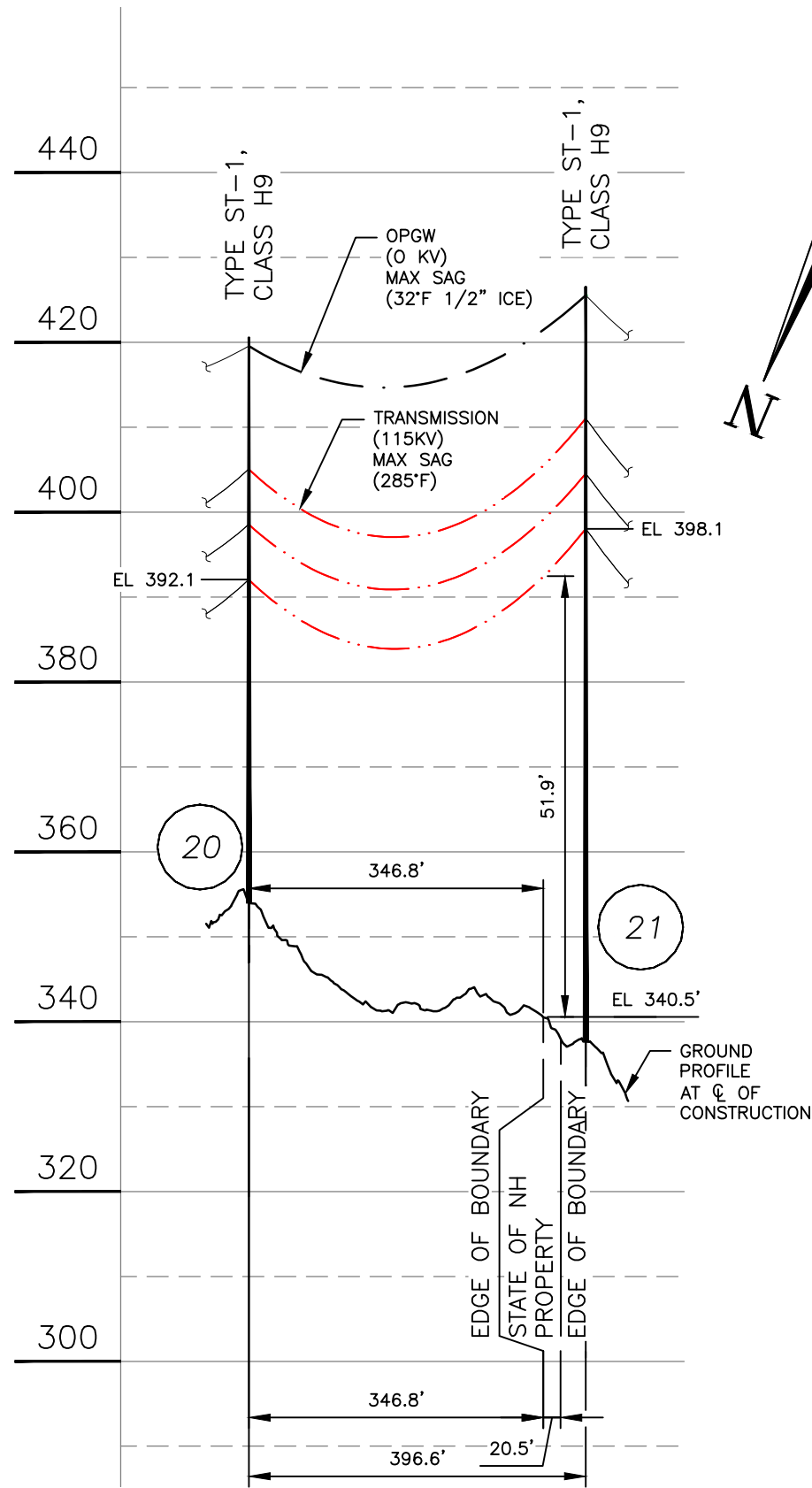
| DWG REV | ISSUED TO PUC | LEIDOS | 08/21 | GEB | DWW | APS |
|---------|-----------------|----------|-------|-----|------|------|
| | EPN/DESCRIPTION | CONT/PE# | DATE | DRN | CHKD | APPR |
| 1 | | | | | | |

EVERSOURCE ENERGY

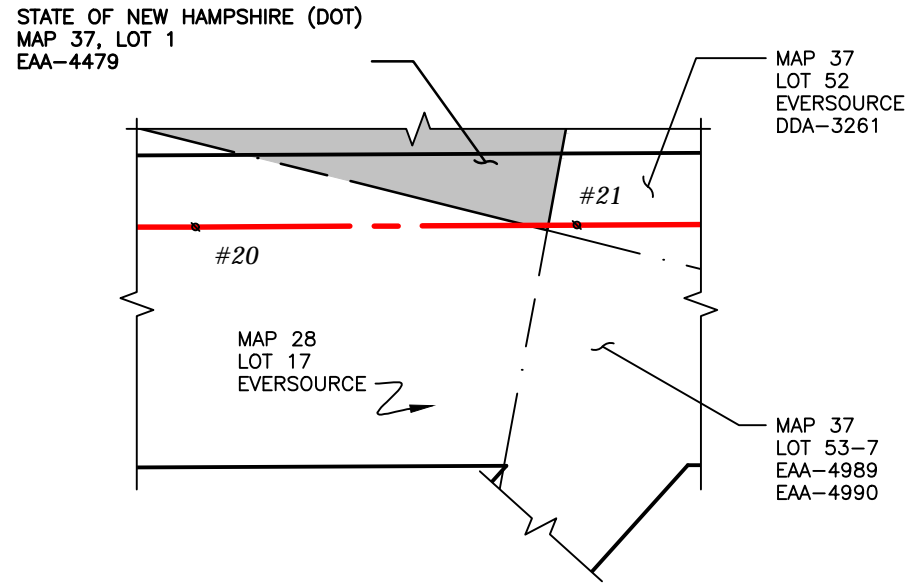
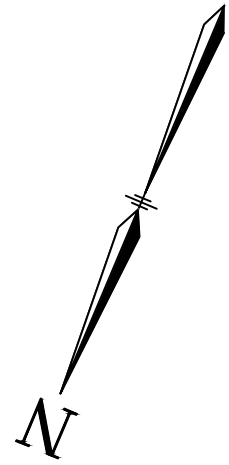
0161, 115kV LINE
MERRIMACK RIVER PUBLIC WATERBODY CROSSING
HOOKSETT, NEW HAMPSHIRE
EXHIBIT 2

| | | |
|-------------------|-------------------------------|---------------------------------|
| SCALE AS SHOWN | FILE: 016143504.DWG IMAGE: | DRAWING NO. 016143504 |
|-------------------|-------------------------------|---------------------------------|

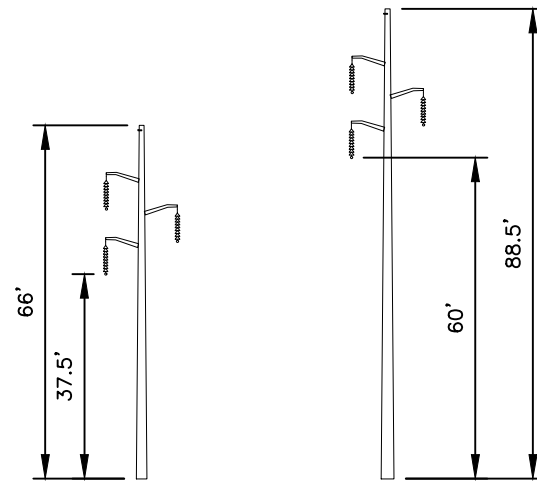
| | |
|----------|------------|
| T | 1 |
| DRAWN | GEB |
| ENGINEER | RSN |
| CHECKED | DWW |
| APPROVED | APS |
| DATE | 08/23/2021 |



PROFILE VIEW
SCALE: HORZ 1" = 200'
VERT 1" = 20'



PLAN VIEW
SCALE: 1" = 200'



STRUCTURE 20
TYPE ST-1
STRUCTURE 21
TYPE ST-1
STR 20 AND 21: ARE EVERSOURCE TYPE ST-1, SINGLE CIRCUIT STEEL POLE WITH DAVIT ARMS, TANGENT, DELTA CONFIG.

STRUCTURE DETAIL
SCALE: NTS

LEGEND:

- #21 STRUCTURE
- STATE OF NEW HAMPSHIRE PROPERTY
- PROPERTY BOUNDARY
- 0161 LINE 115KV LINE, C OF CONSTRUCTION
- LIMITS OF EVERSOURCE RIGHT OF WAY

| STRUCTURE LOCATION | | |
|--------------------|--------------|-------------|
| STRUCTURE | LONGITUDE | LATITUDE |
| 20 | -71.47811825 | 43.04522960 |
| 21 | -71.47948424 | 43.04480390 |

| NESC 2012 VERTICAL CLEARANCE (FT) FROM TABLE 232.1 | |
|--|-------|
| NATURE OF SURFACE UNDERNEATH WIRES, CONDUCTORS OR CABLES | 115kv |
| ROADS, STREETS AND OTHER AREAS SUBJECT TO TRUCK TRAFFIC | 20.1 |

| CABLE SCHEDULE | | | | | | |
|--------------------|---------------|---------------------------|--------------------------|-----------|----------|------------|
| WIRE | QTY OF CABLES | DESCRIPTION | DESIGN CONDITIONS | | | |
| | | | MAX DESIGN TENSION (LBS) | TEMP (°F) | ICE (IN) | WIND (PSF) |
| OPGW | 1 | 144 FIBER OPGW | 4500 | 0 | 0.5 | 4 |
| TRANSMISSION COND. | 3 | 795 KCMIL ACSR 26/7 DRAKE | 8000 | 0 | 0.5 | 4 |

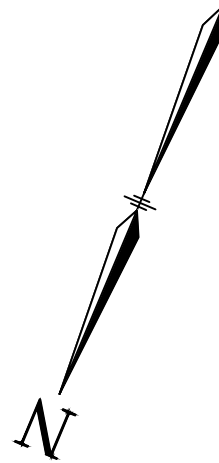
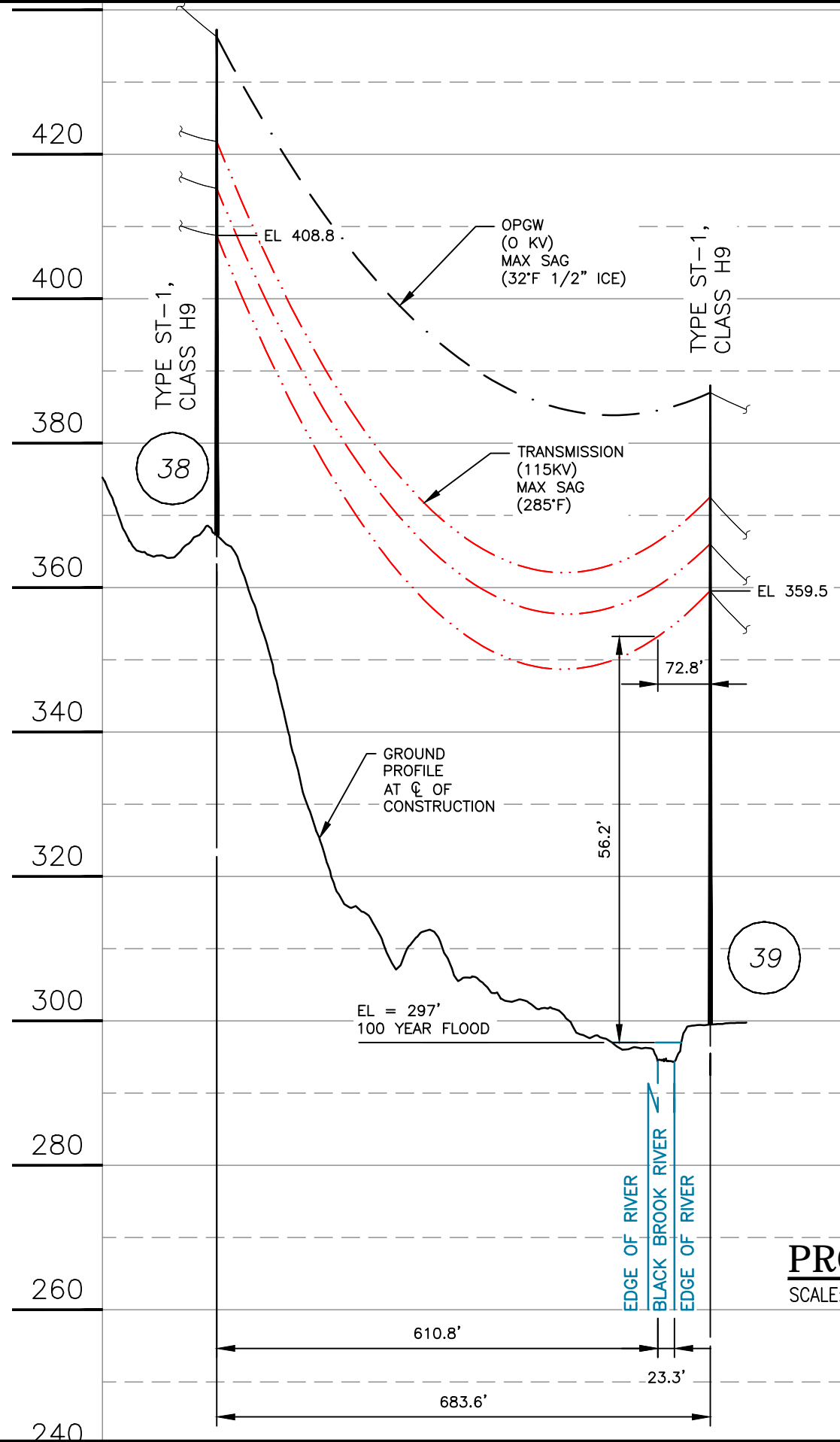
NOTES:

- ELEVATIONS REFERENCED TO THE NORTH AMERICAN VERTICAL DATUM OF 1988.
- STATE LAND PROPERTY BOUNDARIES WERE TAKEN FROM NH GRANITE VIEW AND ARE APPROXIMATE.
- CORNER OF PROPERTY (STEEL REBAR) LOCATED BY EVERSOURCE SURVEY DEPARTMENT 04/10/20

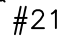




| | |
|---|--------------------------|
| <p>0161, 115KV LINE STATE OWNED LAND CROSSING HOOKSETT, NEW HAMPSHIRE EXHIBIT 3</p> | T 1 |
| | DRAWN GEB |
| | ENGINEER RSN |
| | CHECKED DWW |
| | APPROVED APS |
| DATE 08/23/2021 | DRAWING NO. 016143502 |

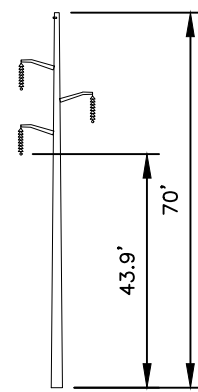
| DWG REV | ISSUED TO PUC | LEIDOS | 08/21 | GEB | DWW | APR |
|-----------------|---------------|--------|-------|------|------|-----|
| EPN/DESCRIPTION | CONT/PE# | DATE | DRN | CHKD | APPR | |
| 1 | | | | | | |

| | | |
|-------------------|---------------------|--------------------------|
| SCALE AS SHOWN | FILE: 016143502.DWG | DRAWING NO. 016143502 |
|-------------------|---------------------|--------------------------|



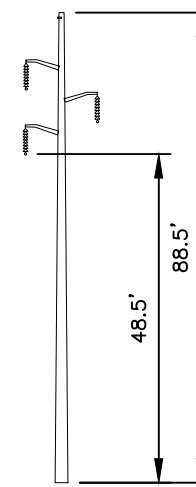
LEGEND:

-  #21 STRUCTURE
-  PROPERTY BOUNDARY
-  0161 LINE 115KV LINE, ϕ OF CONSTRUCTION
-  LIMITS OF EVERSOURCE RIGHT OF WAY
-  PUBLIC WATERBODY



STRUCTURE 38
TYPE ST-1

STR 38: IS A EVERSOURCE TYPE ST-1, SINGLE CIRCUIT STEEL POLE TANGENT, DELTA CONFIGURATION.



STRUCTURE 39
TYPE ST-1

STR 39: IS A EVERSOURCE TYPE ST-1, SINGLE CIRCUIT STEEL POLE TANGENT, DELTA CONFIGURATION.

STRUCTURE DETAIL

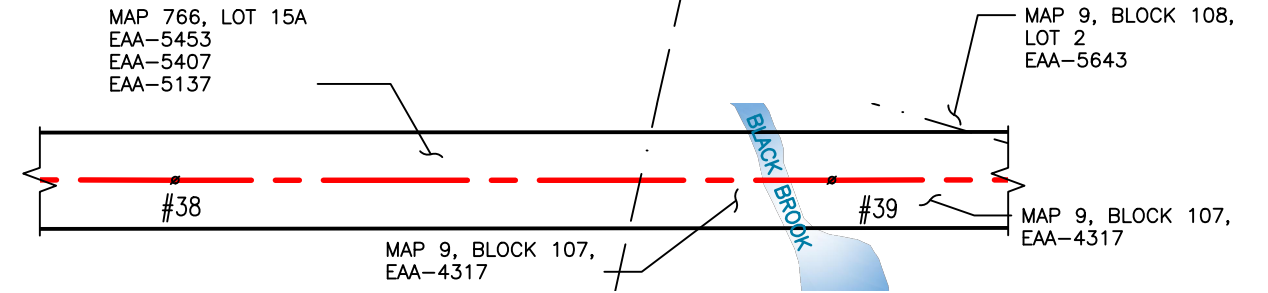
SCALE: NTS

PROFILE VIEW

SCALE: HORZ 1" = 200'
VERT 1" = 20'

| DWG REV | ISSUED TO PUC | LEIDOS | 08/21 | GEB | DWW | APS |
|---------|-----------------|----------|-------|-----|------|------|
| 1 | EPN/DESCRIPTION | CONT/PE# | DATE | DRN | CHKD | APPR |
| | | | | | | |
| | | | | | | |
| | | | | | | |

MANCHESTER, N.H. / GOFFSTOWN, N.H.



PLAN VIEW

SCALE: 1" = 200'


| STRUCTURE LOCATION | | |
|--------------------|--------------|-------------|
| STRUCTURE | LONGITUDE | LATITUDE |
| 38 | -71.50778194 | 43.03601192 |
| 39 | -71.51013999 | 43.03528663 |

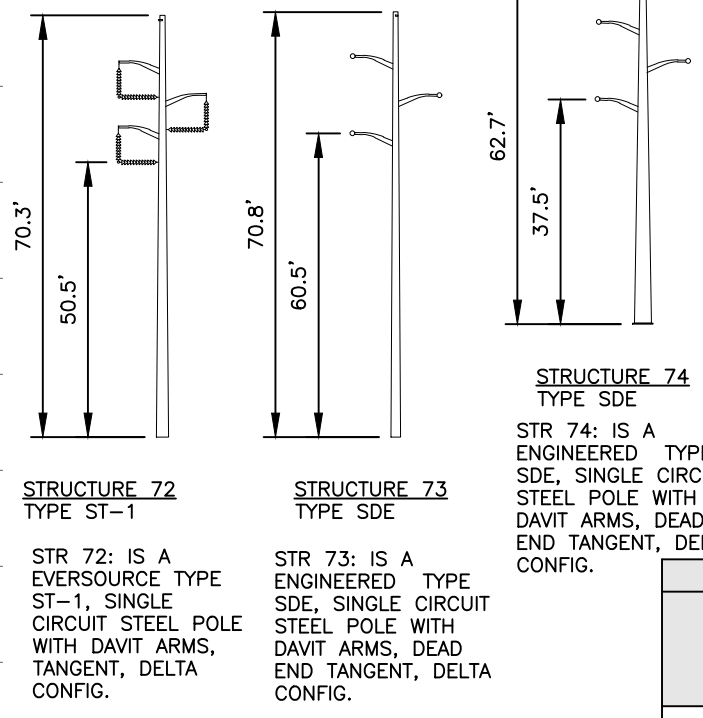
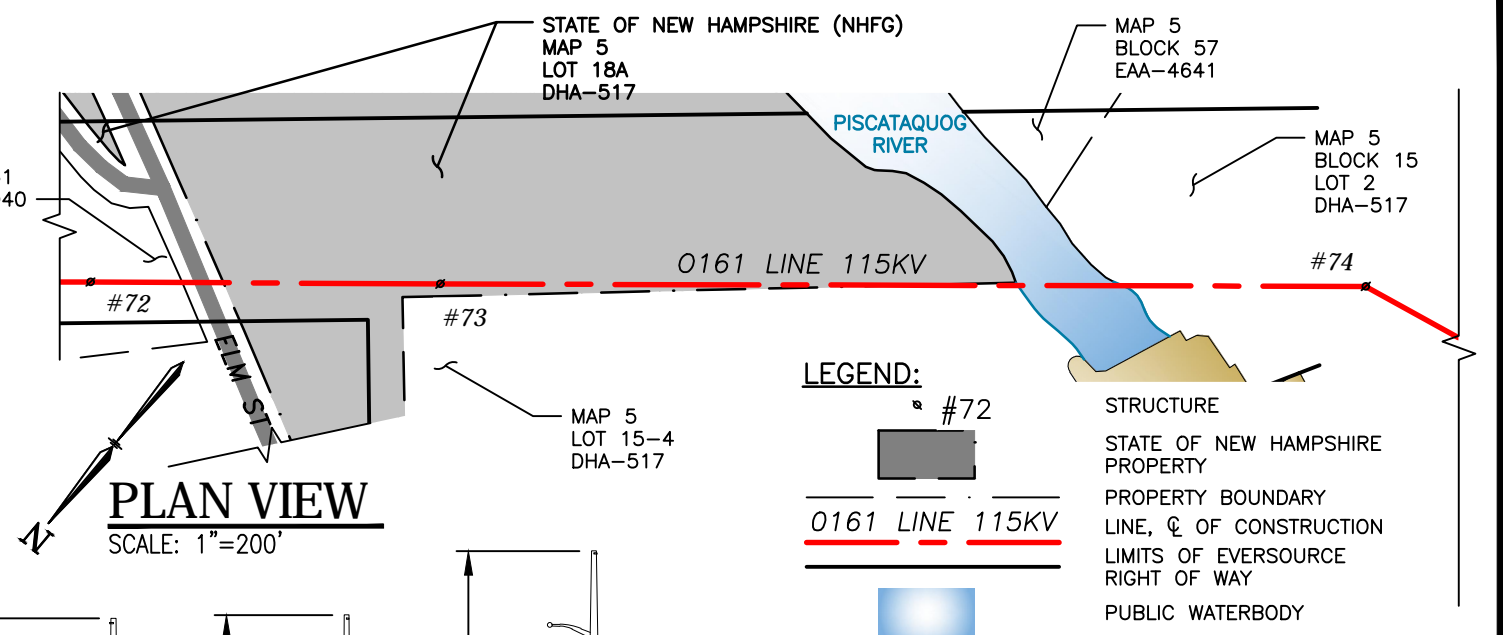
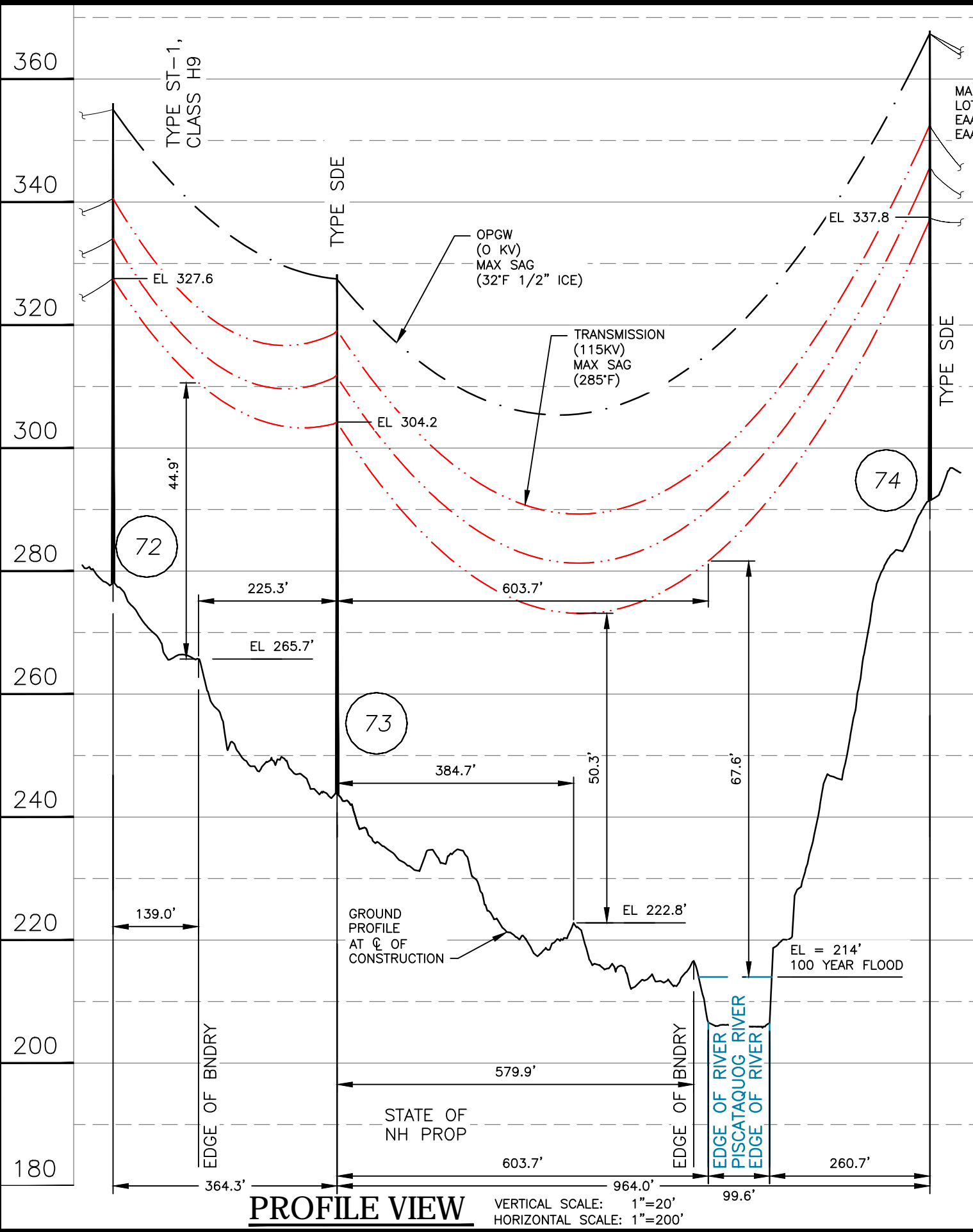
| NESC VERTICAL CLEARANCE (FT) | |
|--|-------|
| NATURE OF SURFACE UNDERNEATH WIRES, CONDUCTORS OR CABLES | 115kV |
| WATER AREAS NOT SUITABLE FOR SAIL BOATING OR WHERE SAIL BOATING IS PROHIBITING | 18.6 |

| CABLE SCHEDULE | | | | | | |
|--------------------|---------------|---------------------------|--------------------------|-----------|----------|------------|
| WIRE | QTY OF CABLES | DESCRIPTION | DESIGN CONDITIONS | | | |
| | | | MAX DESIGN TENSION (LBS) | TEMP (°F) | ICE (IN) | WIND (PSF) |
| OPGW | 1 | 48 FIBER OPGW | 4500 | 0 | 0.5 | 4 |
| TRANSMISSION COND. | 3 | 795 KCMIL ACSR 26/7 DRAKE | 8000 | 0 | 0.5 | 4 |

NOTES:

- GROUND ELEVATION PROFILE DETERMINED USING INFORMATION FROM LIDAR SURVEY.
- VERTICAL DATUM IS NAVD88 IN FEET.
- 100-YEAR FLOOD ELEVATION FROM THE FEMA FLOOD MAP SERVICE CENTER, NATIONAL FLOOD HAZARD LAYER FIRMETTE, 09/25/2009.

| | | | |
|---|--|----------|------------|
|  | | T | 1 |
| | | DRAWN | GEB |
| 0161, 115kV LINE BLACK BROOK PUBLIC WATERBODY CROSSING GOFFSTOWN & MANCHESTER, NEW HAMPSHIRE EXHIBIT 4 | | ENGINEER | RSN |
| | | CHECKED | DWW |
| SCALE: AS SHOWN FILE: 016143505.DWG IMAGE: | | APPROVED | APS |
| | | DATE | 08/23/2021 |
| DRAWING NO. 016143505 | | | |



STRUCTURE DETAIL
 SCALE: NTS

STRUCTURE LOCATION

| STRUCTURE | LONGITUDE | LATITUDE |
|-----------|--------------|-------------|
| 72 | -71.56457165 | 43.01848389 |
| 73 | -71.56562170 | 43.01784703 |
| 74 | -71.56839306 | 43.01615541 |

NESC 2012 VERTICAL CLEARANCE (FT) FROM TABLE 232.1

| NATURE OF SURFACE UNDERNEATH WIRES, CONDUCTORS OR CABLES | 115kV |
|---|-------|
| OTHER AREAS TRAVERSED BY VEHICLES SUCH AS CULTIVATED, GRAZING, FOREST AND ORCHARD LANDS, INDUSTRIAL SITES, COMMERCIAL SITES, ETC. | 20.1 |
| WATERS NOT SUITABLE FOR SAILBOATING | 18.6 |

CABLE SCHEDULE

| WIRE | QTY OF CABLES | DESCRIPTION | DESIGN CONDITIONS | | | |
|--------------------|---------------|---------------------------|--------------------------|-----------|----------|------------|
| | | | MAX DESIGN TENSION (LBS) | TEMP (°F) | ICE (IN) | WIND (PSF) |
| OPGW | 1 | 48 FIBER OPGW | 4500 | 0 | 0.5 | 4 |
| TRANSMISSION COND. | 3 | 795 KCMIL ACSR 26/7 DRAKE | 8000 | 0 | 0.5 | 4 |

- NOTES:**
- ELEVATIONS REFERENCED TO THE NORTH AMERICAN VERTICAL DATUM OF 1988.
 - STATE LAND PROPERTY BOUNDARIES WERE TAKEN FROM NH GRANITE VIEW AND ARE APPROXIMATE.
 - 100-YEAR FLOOD ELEVATION FROM THE FEMA FLOOD MAP SERVICE CENTER, NATIONAL FLOOD HAZARD LAYER FIRMETTE, 09/25/2009.

EVERSOURCE ENERGY

0161, 115kV LINE
 STATE OWNED LAND AND
 PISCATAQUOG RIVER PUBLIC WATERBODY CROSSING
 GOFFSTOWN, NEW HAMPSHIRE
 EXHIBIT 5

DATE: 08/23/2021

DRAWING NO. 016143503

| DWG REV | ISSUED TO PUC | LEIDOS | 08/21 | GEB | DWW | APS |
|---------|-----------------|----------|-------|-----|------|------|
| 1 | EPN/DESCRIPTION | CONT/PE# | DATE | DRN | CHKD | APPR |