

**LEGEND:**

J125 LINE:   
 J125 STR: 

DWG REV	EPN/DESCRIPTION	CONT/PE#	DATE	DRN	CHKD	APPR
2	REISSUED TO PUC		6/21	GBS	CJN	JRS
1	ISSUES TO PUC		04/21	GBS	CJN	JRS

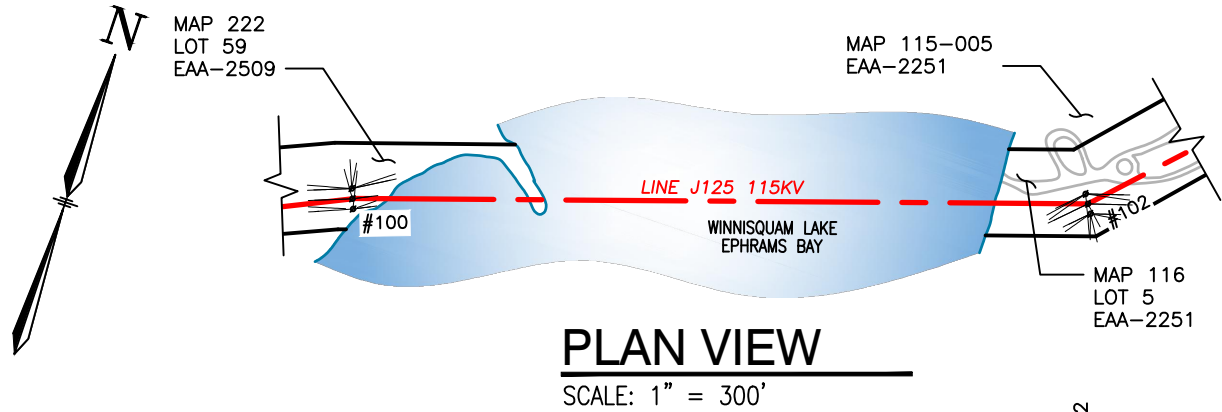
**EVERSOURCE ENERGY**

J125 115kV LINE  
 WINNISQUAM LAKE, LOCATION PLAN  
 BELMONT, NEW HAMPSHIRE  
 EXHIBIT 1

T	2
DRAWN GBS	
ENGINEER CJN	
CHECKED CJN	
APPROVED JRS	
DATE 4/30/21	

SCALE 1" = 1500'	FILE: J12543901.DWG IMAGE:	DRAWING NO. J12543901
---------------------	-------------------------------	--------------------------

6/1/2021 10:25 AM - sullivan - C:\Users\sullivan\appdata\local\temp\AcPublish\_5372\J12543901.dwg - EXHIBIT 2 (WATER CROSSING) ES VER: 12/2016



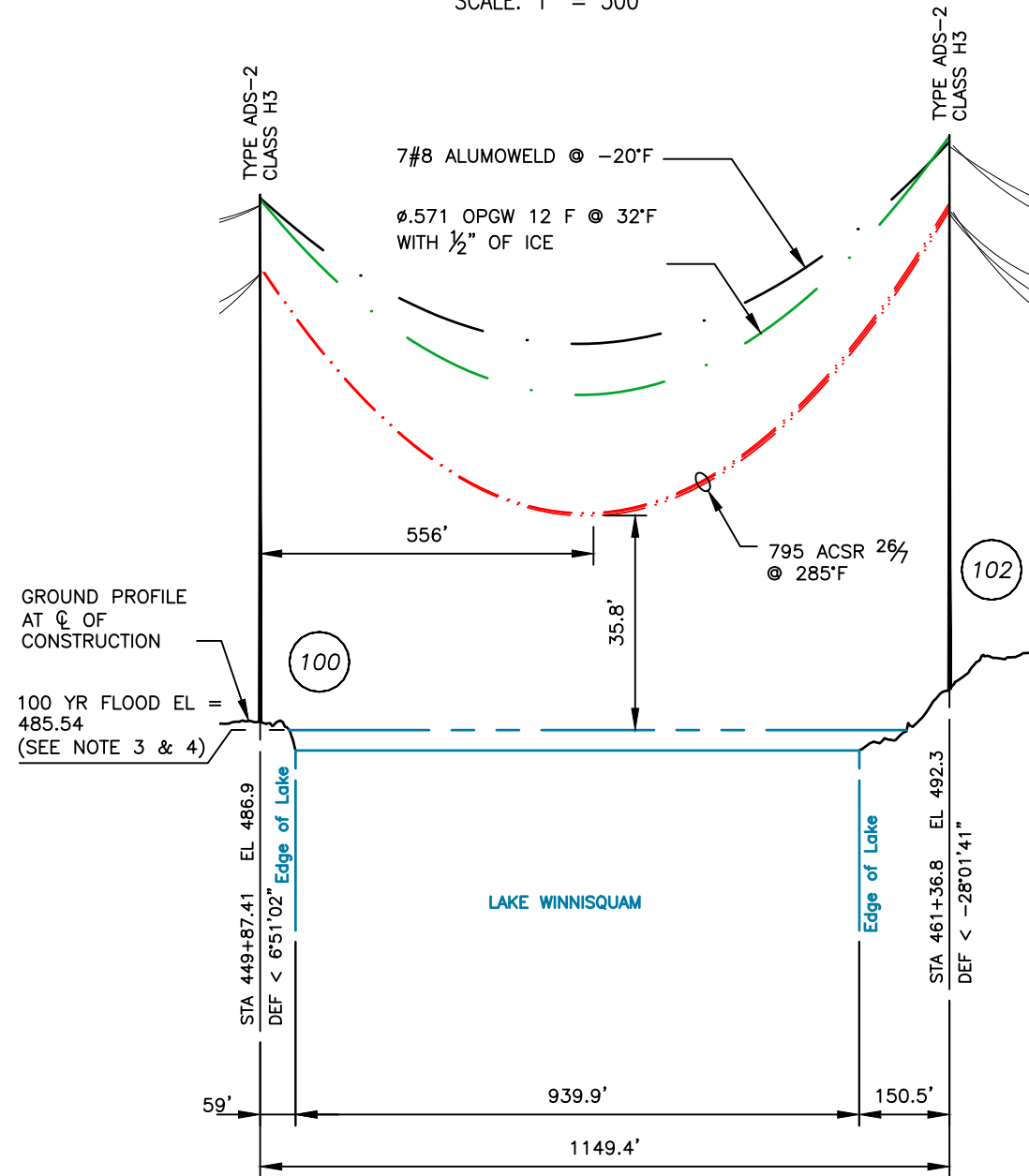
**PLAN VIEW**  
SCALE: 1" = 300'

**LEGEND:**

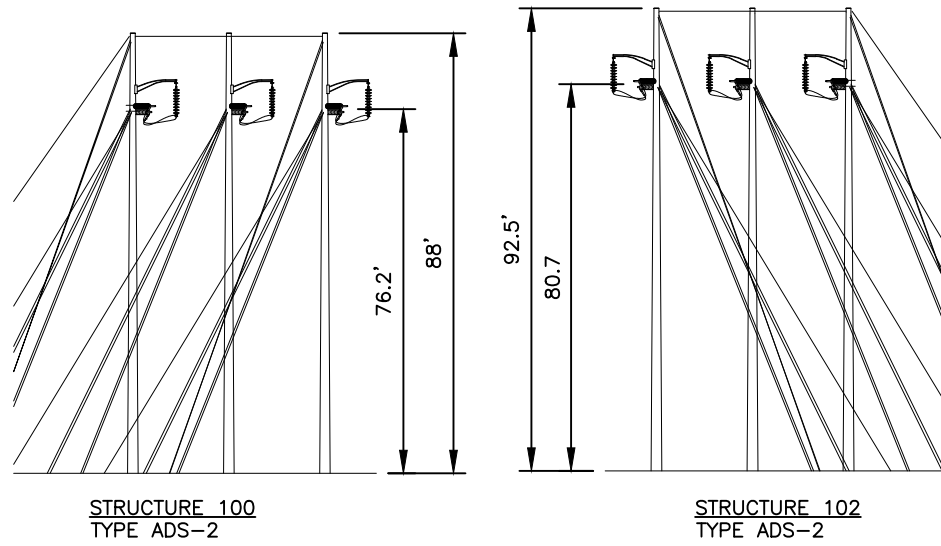
- STRUCTURE (WITH GUYS)
- #102
- J125 LINE 115KV LINE, C OF CONSTRUCTION
- LIMITS OF EVERSOURCE RIGHT OF WAY

STRUCTURE LOCATION		
STRUCTURE	LONGITUDE	LATITUDE
100	-71.52238286	43.47773032
102	-71.51826806	43.47871273

NEC VERTICAL CLEARANCE (FT) FROM TABLE 232.1	
NATURE OF SURFACE UNDERNEATH WIRES, CONDUCTORS OR CABLES	115kV
WATER AREAS NOT SUITABLE FOR SAIL BOATING OR WHERE SAIL BOATING IS PROHIBITED	18.6



**PROFILE VIEW**  
SCALE: HORZ 1" = 300'  
VERT 1" = 30'



STR 100 AND 102: ARE EVERSOURCE TYPE ADS-2, SINGLE CIRCUIT STEEL POLE DEAD END ANGLE, HORIZONTAL CONFIG., GUYED.

**STRUCTURE DETAIL**  
SCALE: NTS

CABLE SCHEDULE						
WIRE	QTY OF CABLES	DESCRIPTION	DESIGN CONDITIONS			
			MAX DESIGN TENSION (lb)	TEMP (°F)	ICE (in)	WIND (psf)
CONDUCTOR	3	ACSS, 795 kcmil 26/7, DRAKE	11000	0	0.5	4
STATIC	1	7 No. 8 AW	5000	0	0.5	4
OPGW	1	BRUGG 12F Ø0.571	6000	0	0.5	4

**NOTES:**

- PARCEL INFORMATION PROVIDED BY NH GRANIT.
- ELEVATIONS REFERENCED TO THE NORTH AMERICAN VERTICAL DATUM OF 1988.
- THE 100 YEAR FLOOD ELEVATION FROM THE FEMA FLOOD SERVICE MAP SERVICE CENTER, NATIONAL FLOOD HAZARD LAYER FIRMETT, TILTON, NH COMMUNITY NO 3300090005C, EFFECTIVE 8/19/1997.
- THE TOWN OF BELMONT, NH COMMUNITY NO 330002B DOES NOT CONTAIN FLOOD ELEVATION DATA. THE NEAREST FLOOD ELEVATION FOR WINNISQUAM LAKE WAS UTILIZED AND CONVERTED FROM NGVD29 TO NAVD88.

<p>J125, 115kV LINE WINNISQUAM LAKE, PUBLIC WATER CROSSING BELMONT, NEW HAMPSHIRE EXHIBIT 2</p>	T 2
	DRAWN GBS
	ENGINEER CJN
	CHECKED CJN
	APPROVED JRS
DATE 4/30/21	DRAWING NO. J12543901

DWG REV	EPN/DESCRIPTION	CONT/PE#	DATE	DRN	CHKD	APPR
2	UPDATED EL VIEW, COND TENSION WAS 7000, STATIC TENSION WAS 4000		6/21	GBS	CJN	JRS
1	ISSUED TO PUC		4/21	GBS	CJN	JRS

