

LEGEND:

- 3196 LINE: - - -
- 3196 STR: 100

EVERSOURCE ENERGY

3196 34.5kV LINE
 PEMIGEWASSET RIVER AND STATE LAND CROSSING
 HOLDERNESS AND PLYMOUTH, NEW HAMPSHIRE
 EXHIBIT 1

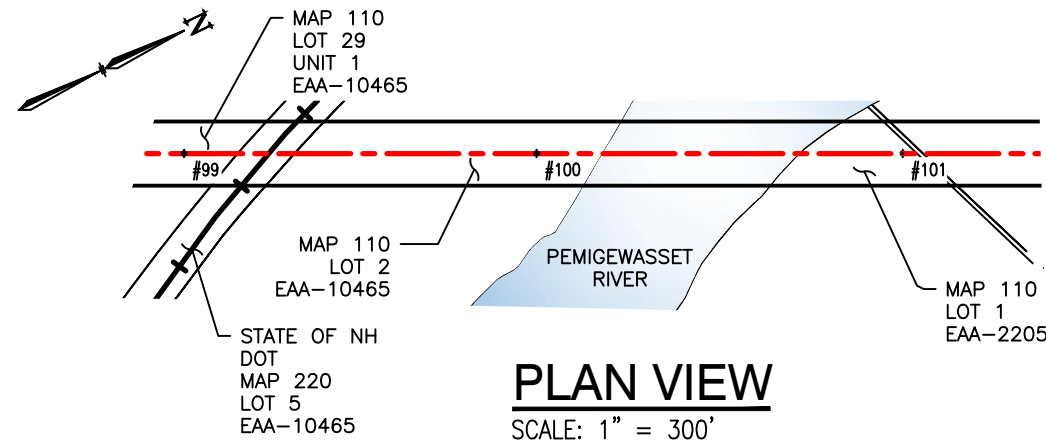
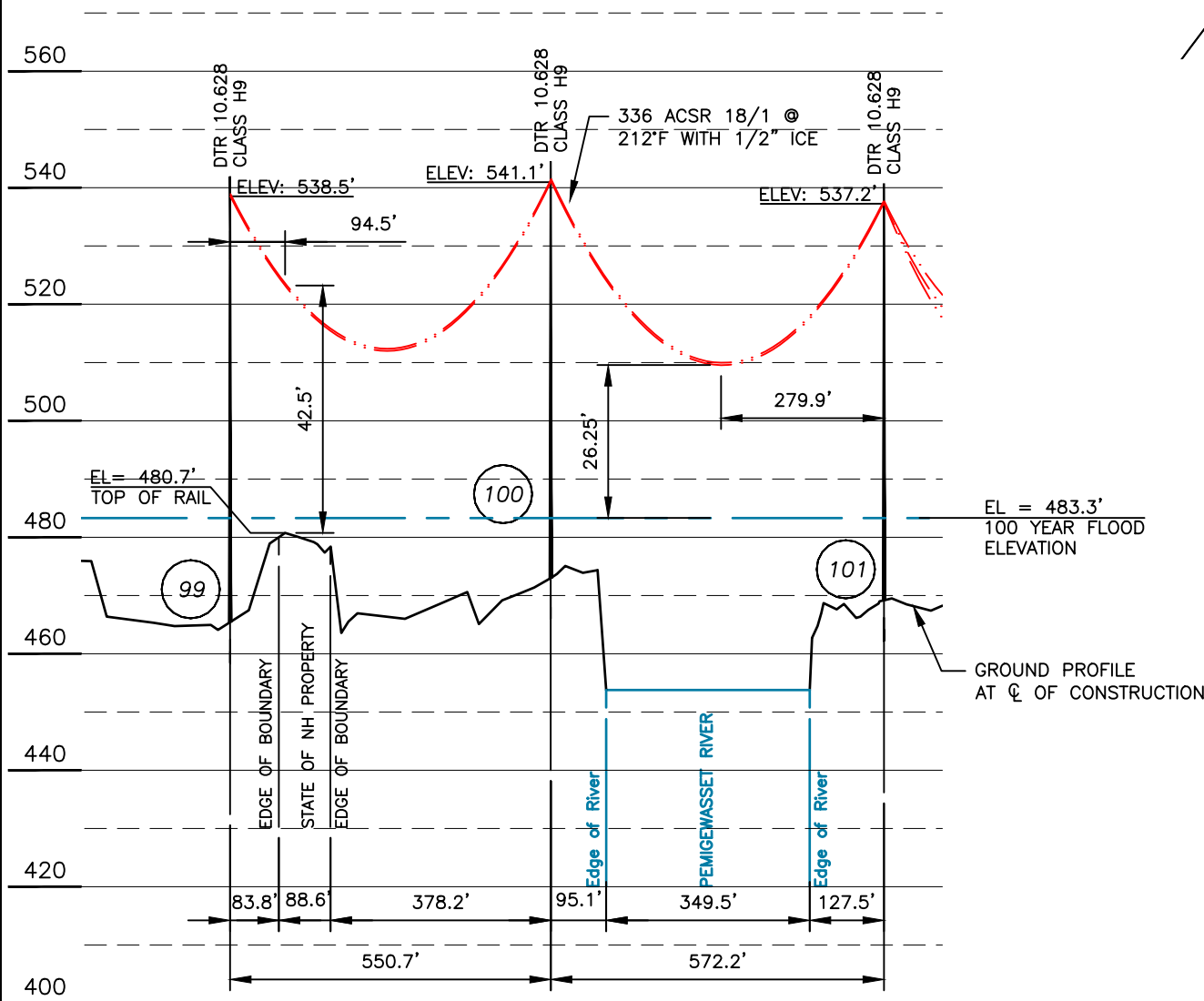
T	1
DRAWN CTS	
ENGINEER JRS	
CHECKED DSD	
APPROVED JRS	
DATE 6/10/2021	

1	SUBMITTED TO PUC WO#DS9RE155	9/20/21	CTS	DSD	JRS	
DWG REV	EPN/DESCRIPTION	CONT/PE#	DATE	DRN	CHKD	APPR

SCALE 1" = 1500'	FILE: 319644901.DWG
IMAGE:	

DRAWING NO. 319644901

9/22/2021 11:30 AM - spensct - C:\Users\spensct\appdata\local\temp\AcPublish_12148\319644901.dwg - EXHIBIT 2 (WATER CROSSING) ES VER: 12/2016



LEGEND:

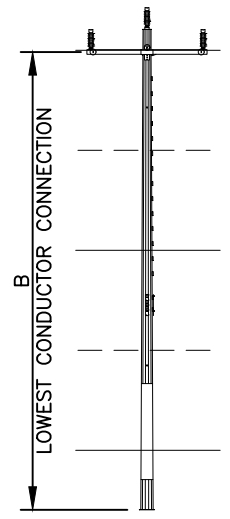
- #100 STRUCTURE
- PROPERTY BOUNDARY
- 3196 LINE 34.5 KV LINE, ϕ OF CONSTRUCTION
- LIMITS OF EVERSOURCE RIGHT OF WAY
- LIMITS OF PUBLIC WATERBODY

STRUCTURE LOCATION

STRUCTURE	LONGITUDE	LATITUDE
99	-71.68591100	43.750806
100	-71.685067	43.752147
101	-71.68418300	43.753561

NESC VERTICAL CLEARANCE (FT)
FROM TABLE 232.1, C2-2012

NATURE OF SURFACE UNDERNEATH WIRES, CONDUCTORS OR CABLES	34.5kV
WATER AREAS NOT SUITABLE FOR SAIL BOATING OR WHERE SAIL BOATING IS PROHIBITED	17.0
TOP OF TRACK RAIL	26.5



STR 99, 100, 101: ARE EVERSOURCE DOUBLE DEADEND, SINGLE CIRCUIT STEEL POLE, HORIZONTAL CONFIG., GUYED.

CABLE SCHEDULE

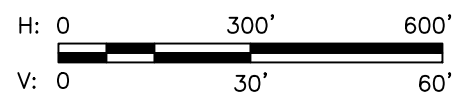
WIRE	QTY OF CABLES	DESCRIPTION	DESIGN CONDITIONS			
			MAX DESIGN TENSION (lb)	TEMP (°F)	ICE (in)	WIND (psf)
CONDUCTOR	3	336 ACSR 18/1	2500	0	0.5	4

- NOTES:**
- PARCEL INFORMATION PROVIDED BY NH GRANIT.
 - ELEVATIONS REFERENCED TO THE NORTH AMERICAN VERTICAL DATUM OF 1988.
 - 100 YEAR FLOOD ELEVATION FROM THE FEMA FLOOD MAP SERVICE CENTER, NATIONAL FLOOD HAZARD LAYER FIRMETTE, 05/20/2021.
 - STRUCTURE 101 WAS PREVIOUSLY REPLACED AS WINTER 2021 EMERGENCY REPLACEMENT. STRUCTURES 99 AND 100 ARE TO BE REPLACED AS MAINTENANCE REPLACEMENTS.

STRUCTURE DETAIL
SCALE: NTS

STRUCTURE DETAILS

STRUCTURE	TYPE	MATERIAL	B
99	DTR 10.628	STEEL	73.1
100	DTR 10.628	STEEL	68.1
101	DTR 10.628	STEEL	68.1



EVERSOURCE ENERGY

3196, 34.5kV LINE
PEMIGEWASSET RIVER AND STATE LAND CROSSING
HOLDERNESS AND PLYMOUTH, NEW HAMPSHIRE
EXHIBIT 2

T 1
DRAWN CTS
ENGINEER JRS
CHECKED DSD
APPROVED JRS
DATE 6/10/2021

SCALE AS SHOWN FILE: 319644901.DWG DRAWING NO. 319644901

DWG REV	EPN/DESCRIPTION	CONT/PE#	DATE	DRN	CHKD	APPR
1	SUBMITTED TO PUC WO#DS9RE155		9/20/21	CTS	DSD	JRS