



October 21, 2016
Annual Seminar
New England
Pipeline Safety Representatives
Portland, Maine

Randy Knepper
Director of Safety, NHPUC

NH Program Operational Overview

- ▣ No Interstate Operator nor Haz Liquid Operator Certification with PHMSA (5 operators in NH)
- ▣ No gathering lines
- ▣ No municipal gas operators
- ▣ Interstate Haz Liq Pipeline Ops: 1
- ▣ 75 miles Crude Oil
- ▣ Interstate Nat Gas Pipeline Ops: 4
- ▣ 230 miles

CANCELED APRIL 2016

Legend

- Proposed Pipeline Laterals
- Existing TGP
- Proposed Supply Path Component
- Proposed Market Path Component

**CANCELED
APRIL 2016**

Legend

- Proposed Pipeline Laterals
- Existing TGP
- Proposed Supply Path Component
- Proposed Market Path Component

NH Program Operational Overview

- ▣ 3 gas LDCs (No new ones)
- ▣ 4 Intrastate Transmission Operators (including Landfill)
- ▣ 1 LNG Plant Operator (3 plants)
- ▣ 1 LP Plant Operator (3 plants)
- ▣ 1 Master Meter Operator
- ▣ Distribution mileage:
 approx. 3,140 miles
- ▣ Distribution services:
 - approx. 91,500 services,
 - approx. 120,000 gas customers

NH Program Operational Overview

- ▣ Propane Systems:
 - 28 LPG Operators
 - Approx 800 jurisdictional LPG systems
 - Merger activity continues within industry
- ▣ 2 inspectors (1: 4 years & 1: 10+ years)
- ▣ Well Established Underground Damage Prevention System > 30 years
 - Administered by Safety Division

NH 2015 Pipeline Asset Statistics

▣ Pipelines:

- Interstate Transmission: 232 miles
- Intrastate Transmission: 19 miles
- Distribution Mains: 1,915 miles
- Distribution Services: 91,500 services
- Equiv Dist Services: 1,200 miles

Aged Infrastructure Mains: 200 miles (2009) > 128 miles 2015 **36% Reduction**

Aged Infrastructure Services: 125 miles (2009) > 80 miles 2015 **36% Reduction**

NH Program Operational Overview

▣ 2016 External Focus:

1. Re-examining Operator fundamentals
 - Over Pressure Protection Settings,
 - Leak Surveys, Leak Records and Leak Reporting
 - Integration of Data into DIMP
2. Continued Accelerated Replacement Leak Prone Pipe
 - 21 years left CI & BS proposed to be replaced in 10 years for 1 operator – Utility has recommended after Staff urging
 - 1 years left CI& BS for 2nd operator

NH Program Operational Overview

▣ 2016 Focus: *In Process*

1. **Internal Goals:** Rewriting Inspection Forms & Processes used for Documentation
2. **Internal Goals:** Updating Website
3. **Internal Goals:** Less Lengthy Violation Resolution

Top 5 **NH** Enforcement Issues in 2015

- ▣ Failure to Follow Written Procedures
- ▣ Exceeding MAOP documentation including Uprates and Previous MAOP documentation
- ▣ Poor Record Keeping for LP Operators on performing yearly maintenance
- ▣ Leak Surveys – Poor Documentation

Basic Mistakes



2015 Meter Protection Many Near Misses

*Long Cold Winter in New
Hampshire*

*Near Record Snowfall in February
2015*

Snow Removed from Roof, Driveways, Walkways



Portsmouth, NH Roof Collapses



Hampton, NH Large Icicles



Derry, NH Meter Protection



Seacoast Meter Protection



Falling Ice, Narrow Escapes



First Responders



Customer Attempt at Meter Protection



Roof Snow Removal



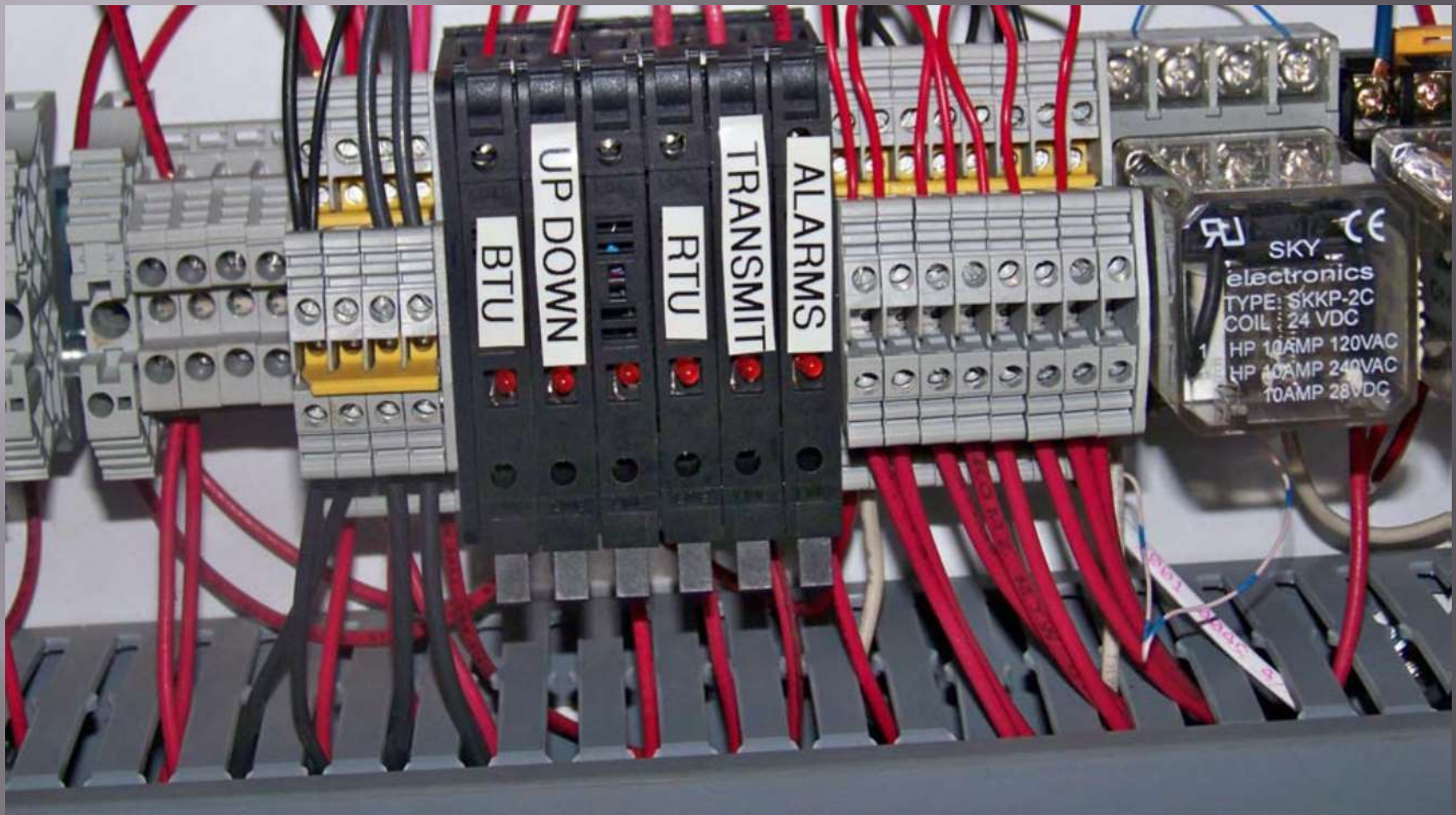
Damaged Meter



Incident Pipe Thread Leak, Resulting Fire



Incident #2 Significant in Judgement of Operator



Incident #2 Significant in Judgement of Operator



General Information

- Contact Information

Dig Safe

- Underground Damage Prevention Overview
- Dig Safe Rules
- Dig Safe Laws
- Enforcement Program
- Overall NH Damage Prevention Statistics
- 811 Dig Safe "Call before you dig"
- Underground Damage Report Forms
- Utilities By City/Town
- Education and Training

Pipeline Safety

- Pipeline Safety Overview
- NH Pipeline Mileage Statistics
- Authorities per NH State Law/Administrative Rules
- Pipeline Safety Program Funding
- Accelerated Cast Iron Bare Steel Replacement Programs
- Pipeline Safety Incidents in New Hampshire
- Regional and National Involvement
- Pipeline Safety Rules
- Education and Training

Electrical Safety and Reliability

- Electrical Safety and Reliability Overview
- Electric Franchise Map

Home > Safety

Pipeline Safety Incidents in New Hampshire

The incident history of gas distribution pipelines reveals infrequent pipeline incidents. Since 1989, six incidents have occurred in New Hampshire-see [27 Yr Historical Gas Incidents Chart](#). No fatalities or bodily injuries have resulted from these pipeline safety incidents.



2015 Keene NH: In December 2015, the Keene division of EnergyNorth Natural Gas Corp. d/b/a Liberty Utilities (formerly New Hampshire Gas) experienced an abnormal quality of gas mixture being introduced into its gas distribution systems. Plant equipment was affected by voltage fluctuations that in turn caused the blower equipment to shut down which significantly and adversely affected the normal propane/air mixing process used for systems

supplies. This resulted in a higher British thermal unit (Btu) gas mixture being directed into the distribution systems and significantly contributed to incomplete fuel combustion at some customer appliances. The incident did not result in any property damage, bodily injury, fatalities or loss of gas in excess of 3 million cubic feet but was deemed "significant in the judgment of the operator" as allowed by federal regulations. A report was submitted to the Commission by the Safety Division in [Docket # IR 15-517](#).

2015 Hampton NH:

Unfortunately, in February 2015, a house in Hampton caught fire as a result of a natural gas leak near a meter set at the foundation of the home. The gas piping was owned and operated by Northern Utilities, Inc. The historic and excessive snowfalls in February 2015 resulted in shoveled snow from the roof damaging the meter and subsequently the ensuing house fire resulted in excess of \$150,000 damage. Fortunately, the residents were able to evacuate the premises without serious injury.



NH ranks as 30th worst in % Total Main Miles for Bare Steel

Year: 2013

State	Miles Bare Steel Main	% of Total Main Miles	Service Count	% of Total Service Count
PENNSYLVANIA	7,611.10	16.1%	395,294	10.4%
OHIO	7,193.26	12.6%	151,336	4.3%
TEXAS	6,667.22	6.6%	157,704	3.2%
NEW YORK	6,512.46	13.6%	317,447	10.0%
KANSAS	3,433.28	15.5%	126,554	13.3%
CALIFORNIA	3,430.94	3.3%	17,801	0.2%
WEST VIRGINIA	2,911.75	27.2%	82,337	19.4%
OKLAHOMA	1,782.73	7.0%	54,539	4.2%
MASSACHUSETTS	1,697.82	8.0%	196,310	14.6%
NEW JERSEY	1,566.20	4.6%	269,566	11.6%
MICHIGAN	1,354.26	2.4%	49,493	1.5%
ARKANSAS	1,341.41	6.6%	22,724	3.4%
MISSOURI	1,190.22	4.4%	13,578	0.9%
FLORIDA	1,135.48	4.2%	43,033	4.9%
NEBRASKA	958.77	7.6%	5,130	0.9%
LOUISIANA	920.68	3.6%	26,857	2.4%
KENTUCKY	806.38	4.9%	23,892	2.9%
INDIANA	741.81	1.8%	3,079	0.2%
MISSISSIPPI	619.82	4.0%	2,855	0.5%
ALABAMA	591.20	2.0%	151,512	14.4%
VIRGINIA	574.80	2.7%	15,000	1.2%
ARIZONA	548.72	2.3%	11,487	0.9%
MINNESOTA	438.40	1.5%	5,482	0.4%
RHODE ISLAND	319.84	10.1%	41,821	21.7%
ILLINOIS	315.87	0.5%	26,597	0.7%
MARYLAND	308.48	2.1%	91,270	9.0%
COLORADO	229.96	0.7%	19,101	1.2%
CONNECTICUT	173.72	2.2%	55,468	12.9%
IOWA	172.49	1.0%	8,318	0.9%
HAWAII	109.10	17.9%	7,272	20.9%
NEW MEXICO	98.44	0.7%	10,477	1.7%
TENNESSEE	81.27	0.2%	2,904	0.2%
GEORGIA	81.20	0.2%	11,706	0.6%
WYOMING	41.08	0.6%	3,078	1.7%
SOUTH DAKOTA	32.30	0.7%	2,157	1.1%
NEW HAMPSHIRE	29.88	1.6%	6,704	7.5%
DISTRICT OF COLUMBIA	27.72	2.3%	6,908	5.6%
WASHINGTON	23.30	0.1%	2,094	0.2%
DELAWARE	22.59	0.6%	957	0.6%
MONTANA	10.03	0.1%	599	0.2%
OREGON	10.01	0.1%	69	0.0%
SOUTH CAROLINA	10.00	0.0%	410	0.1%
NORTH DAKOTA	7.81	0.2%	68	0.0%
UTAH	6.56	0.0%	8	0.0%
MAINE	1.67	0.2%	185	0.7%
ALASKA	0.49	0.0%	0	0.0%

3
6
11
5
4
19
1
10
8
14
21
12
15
16
9
18
13
28
17
27
20
23
7
26
30
3
20



NH ranks as 9th worst in % Total Main Miles for Cast Iron

Nations Worst

DC 1
RI 2
CT 3
MA 4
NJ 5
MD 6
NY 7
PA 8
ME 10

Year: 2013

State	Miles Main	% of Total Main Miles	Service Count	% of Total Service Count
NEW JERSEY	4,881	14.3%	0	0.0%
NEW YORK	4,254	8.9%	7,208	0.2%
MASSACHUSETTS	3,634	17.1%	1,583	0.1%
PENNSYLVANIA	3,114	6.6%	60	0.0%
MICHIGAN	3,011	5.3%	17	0.0%
ILLINOIS	1,645	2.7%	74	0.0%
CONNECTICUT	1,426	18.2%	37	0.0%
MARYLAND	1,378	9.4%	0	0.0%
ALABAMA	1,200	4.1%	139	0.0%
MISSOURI	1,071	4.0%	0	0.0%
TEXAS	892	0.9%	0	0.0%
RHODE ISLAND	831	26.1%	185	0.1%
OHIO	570	1.0%	53	0.0%
NEBRASKA	457	3.6%	0	0.0%
DISTRICT OF COLUMBIA	418	34.9%	0	0.0%
LOUISIANA	334	1.3%	346	0.0%
VIRGINIA	333	1.6%	78	0.0%
INDIANA	275	0.7%	0	0.0%
FLORIDA	211	0.8%	0	0.0%
NEW HAMPSHIRE	125	6.6%	39	0.0%
TENNESSEE	118	0.3%	0	0.0%
ARKANSAS	103	0.5%	0	0.0%
DELAWARE	86	2.9%	0	0.0%
KENTUCKY	86	0.5%	1,233	0.2%
KANSAS	86	0.4%	0	0.0%
MAINE	51	5.5%	47	0.2%
MISSISSIPPI	45	0.3%	1	0.0%
MINNESOTA	30	0.1%	0	0.0%
CALIFORNIA	29	0.0%	0	0.0%
COLORADO	14	0.0%	0	0.0%
WEST VIRGINIA	14	0.1%	30	0.0%
SOUTH DAKOTA	9	0.2%	0	0.0%
IOWA	7	0.0%	7	0.0%
GEORGIA	5	0.0%	0	0.0%
WASHINGTON	3	0.0%	0	0.0%

5
7
4
8

3
6

2

1

10

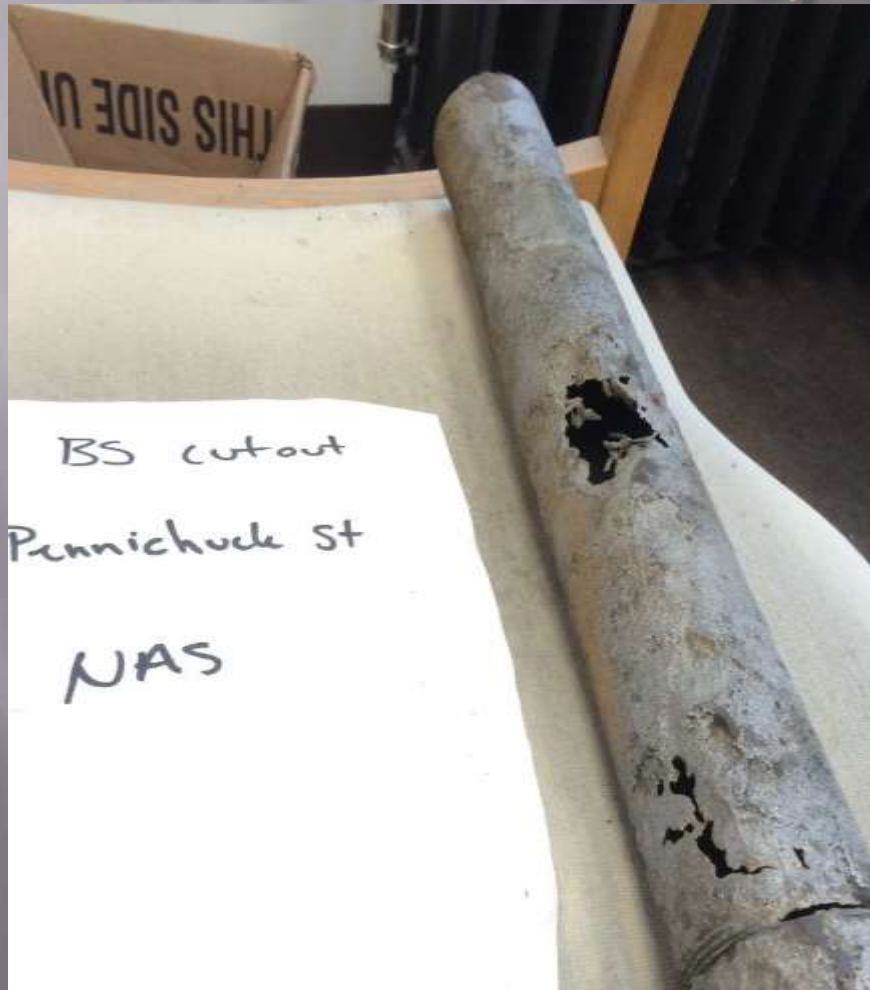


Accelerated Replacement

- ▣ 2016 New Hampshire Cast Iron Bare Steel Replacement Program
- ▣ Eliminated Another 6 miles CI
- ▣ Eliminated Another 8 miles BS

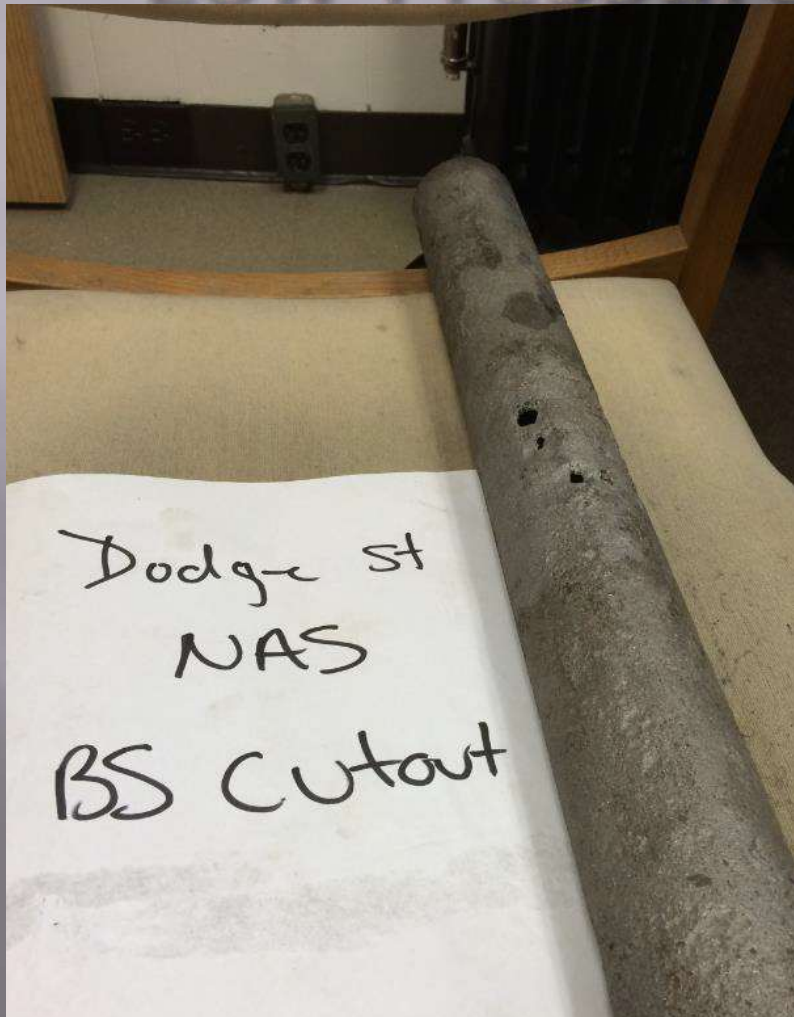
Accelerated Recovery of Violation?

2" Bare Steel, 1913, Orig .133",
Low Pressure, Wall Loss 100%



Accelerated Recovery of Violation?

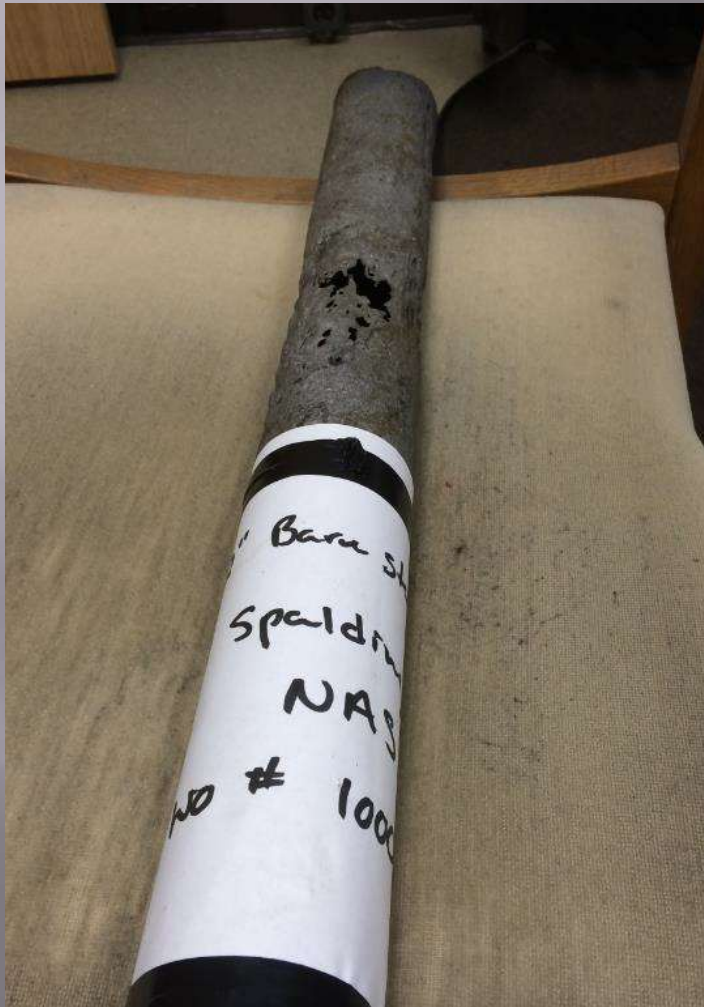
2" Bare Steel, 1956 Orig .139,
Low Pressure, 100% Wall Loss



1" Bare Steel, Unknown Date, Orig Wall .133" 60 PSIG, 100% Wall Loss



2" Bare Steel Original .160" 1956 60 PSIG 100% Wall Loss



7 years of Bare Steel Replacement Reports Now on PUC Websites

FY 2013

Address	5-19 Lemon St
Town	Nashua
Pipe Size	2"
Install Date	1902/1925
Wall Thickness	Unknown
Age	110
Pressure	12 in water column
Ground PH	6
Pipe Condition	100% Wall Loss/ Very Poor Condition



2016/2017 **NH** Major Construction Activity

- ▣ Construction Activity – Unitil is aggressively installing and expanding mains to unserved areas
- ▣ Construction Activity – Liberty is pursuing a CNG Strategy to reach unserved areas by installing CNG Station
- ▣ Liberty in 2016 has initiated expansion of mains programs
- ▣ Concord Steam conversion 2016/2017

Program Metrics

- ▣ Track and Trend Leaks, Leak Repairs
- ▣ Track and Trend Emergency Responses
- ▣ Track and Trend Underground Damage Prevention Stats
- ▣ Track and Trend Accelerated Replacement Program
- ▣ Track Odorization Levels
- ▣ Track and Trend O&M Work Hours
- ▣ Track Evacuations

What's New?

- ▣ June 2014
- ▣ Maximum Fine for New Hampshire Pipeline Safety Violations now matches the Federal Level of \$200,000 up to \$2,000,000
- ▣ Previous Level was \$100,000 up to \$1,000,000.
- ▣ Applies to Willful and Non Willful Violations

NH versus Federal Compliance Actions Pipeline Safety Only (Not DIGSAFE)

- Emergency Order
- Commission Order
- **NOV**
- NOPV
- NOA
- Letter of Concern
- Warning (Oral or written)



Types of PHMSA Enforcement Actions

- NOPSO – Notice of Proposed Safety Order
- CAO - Corrective Action Order
- PCP - Proposed Civil Penalty (Part of NOPV)
- PCO - Proposed Compliance Order (Part of NOPV)
- NOPV - Notice of Probable Violation
- NOA - Notice of Amendment
- WL - Warning Letter (Warning item may be part of NOPV)
- LOC - Letter of Concern

NEW CHANGE GOING FORWARD FOR COMPLIANCE

- 1) Will now be writing compliance actions to the subsection level
- 2) Will list all applicable code sections rather than predetermining most important

New Hampshire Damage Prevention Update

NH Damage Prevention Update

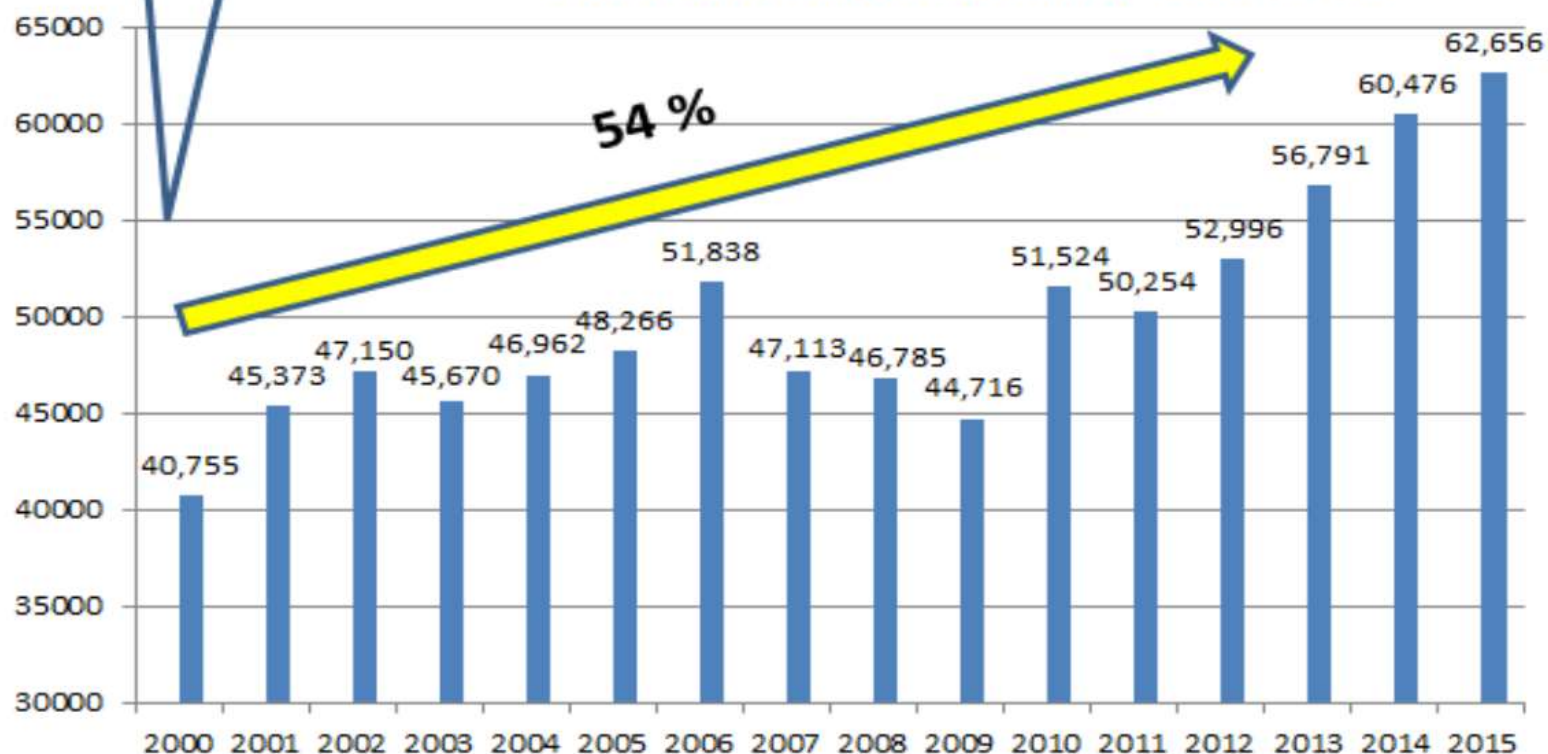
- ▣ Statistics are now posted on our website

NH Damage Prevention Statistical Update			
Year	Excavator	Operator	Total
	Gas Damages Per 1000	Gas Damages Per 1000	Gas Damages Per 1000
2010	1.19	0.52	1.71
2011	1.17	0.41	1.58
2012	1.29	0.34	1.63
2013	0.71	0.40	1.11
2014	0.81	0.45	1.26
2015*	0.87*	0.45*	1.32*

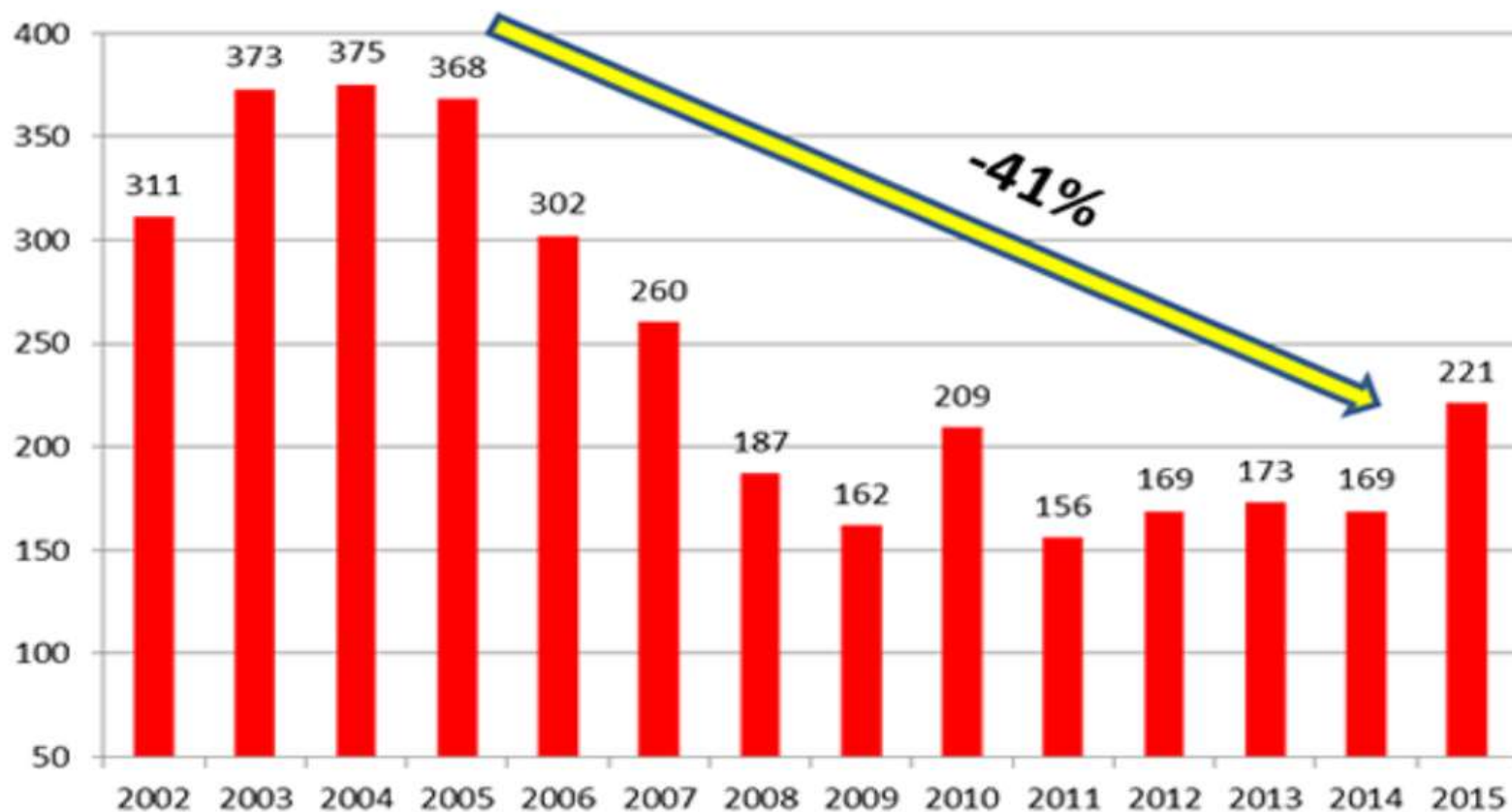
16 year average
49,958

CALLS TO DIG SAFE SYSTEMS, INC. FOR NH LOCATES 2000 - 2015

DIG SAFE ANNUAL REPORT 2015



**REPORTED DIG SAFE DAMAGES or PROCEDURAL VIOLATIONS
2002-2015
to THE NEW HAMPSHIRE PUC SAFETY DIVISION**



2015 One Call Progress Report - Gas Final

Underground Damage Enforcement Proceedings involving gas facilities in New Hampshire that were closed by Underground Damage Prevention Specialist (William Ruoff) in CY 2015 *

Year of Violation/ Incident	# of Gas Enforcement Actions	Type of Enforcement		at Fault	Gas	Collected Fines and Equivalent Training Value
2015	36	Fine (Civil Penalty)		Excavator	17	\$8,100
		Fine (Civil Penalty)		Operator	19	\$9,500
2014	0	Fine (Civil Penalty)		Excavator	0	\$0
		Fine (Civil Penalty)		Operator	0	\$0
2013	0	Fine (Civil Penalty)		Excavator	0	\$0
		Fine (Civil Penalty)		Operator	0	\$0
2012	0	Fine (Civil Penalty)		Excavator	0	\$0
		Fine (Civil Penalty)		Operator	0	\$0
SubTotal	36	Fine (Civil Penalty)		Excavator	17	\$8,100
		Fine (Civil Penalty)		Operator	19	\$9,500
2015	21	Equivalent Training (Civil Penalty)		Excavator	21	\$10,500
2014	3	Equivalent Training (Civil Penalty)		Excavator	3	\$1,500
2013	0	Equivalent Training (Civil Penalty)		Excavator	0	\$0
2012	0	Equivalent Training (Civil Penalty)		Excavator	0	\$0
SubTotal	24	Equivalent Training (Civil Penalty)		Excavator	24	\$12,000
2015	8	Dismissal	Dismissed	Either	3	NA
			Homeowner	Excavator	2	NA
			Reasonable Care	Excavator	2	NA
			No Violation	Either	1	NA
			Non-Jurisdictional	Either	0	NA
			Unknown	Excavator	0	NA
2014	0	Dismissal	Dismissed	Either	0	NA
			Homeowner	Excavator	0	NA
			Reasonable Care	Excavator	0	NA
			No Violation	Either	0	NA
			Non-Jurisdictional	Either	0	NA
			Unknown	Excavator	0	NA
2013	0	Dismissal	Dismissed	Either	0	NA
			Homeowner	Excavator	0	NA
			Reasonable Care	Excavator	0	NA
			No Violation	Either	0	NA
			Non-Jurisdictional	Either	0	NA
			Unknown	Excavator	0	NA
2012	1	Dismissal	Dismissed	Either	1	NA
			Homeowner	Excavator	0	NA
			Reasonable Care	Excavator	0	NA
			No Violation	Either	0	NA
			Non-Jurisdictional	Either	0	NA
			Unknown	Excavator	0	NA
2015	65	Total Gas Enforcement Actions			65	\$28,100
2014	3	Total Gas Enforcement Actions			3	\$1,500
2013	0	Total Gas Enforcement Actions			0	\$0
2012	1	Total Gas Enforcement Actions			1	\$0
Total	69	Grand Total			69	\$29,600
				Actual Fines Collected		\$17,600

* These statistics include Underground Damage Prevention proceedings that were successfully closed during 1st Quarter 2016 (through March 31, 2016).

- 69 Gas Investigations
- \$29,600 in Civil Penalties

2015 One Call Progress Report - Non-Gas Final

Underground Damage Enforcement Proceedings involving non-gas facilities in New Hampshire that were closed by Underground Damage Prevention Specialist (William Ruoff) in CY 2015 *

Year of Violation/ Incident	Non-Gas Enforcement Actions	Type of Enforcement	at Fault	Electric	Phone	Cable	Water	Other	Total	Collected Fines and Equivalent Training Value
2015	47	Fine (Civil Penalty)	Excavator	4	5	4	0	0	13	\$6,500
		Fine (Civil Penalty)	Operator	15	13	6	0	0	34	\$17,000
2014	2	Fine (Civil Penalty)	Excavator	0	0	0	0	0	0	\$0
		Fine (Civil Penalty)	Operator	0	1	1	0	0	2	\$1,000
2013	0	Fine (Civil Penalty)	Excavator	0	0	0	0	0	0	\$0
		Fine (Civil Penalty)	Operator	0	0	0	0	0	0	\$0
2012	0	Fine (Civil Penalty)	Excavator	0	0	0	0	0	0	\$0
		Fine (Civil Penalty)	Operator	0	0	0	0	0	0	\$0
SubTotal	49	Fine (Civil Penalty)	Excavator	4	5	4	0	0	13	\$6,500
		Fine (Civil Penalty)	Operator	15	14	7	0	0	36	\$18,000
2015	28	Equiv. Training (Civ. Penalty)	Excavator	22	2	4	0	0	28	\$14,000
2014	8	Equiv. Training (Civ. Penalty)	Excavator	6	2	0	0	0	8	\$4,000
2013	1	Equiv. Training (Civ. Penalty)	Excavator	0	0	1	0	0	1	\$500
2012	0	Equiv. Training (Civ. Penalty)	Excavator	0	0	0	0	0	0	\$0
SubTotal	37	Equiv. Training (Civ. Penalty)	Excavator	28	4	5	0	0	37	\$18,500
2015	13	Dismissal	Dismissed	Either	3	0	0	0	3	NA
			Homeowner	Excavator	8	0	1	0	9	NA
			Reasonable Care	Excavator	0	0	0	0	0	NA
			No Violation	Either	1	0	0	0	1	NA
			Non-Jurisdictional	Either	0	0	0	0	0	NA
			Unknown	Excavator	0	0	0	0	0	NA
2014	1	Dismissal	Dismissed	Either	0	0	0	0	0	NA
			Homeowner	Excavator	0	0	0	0	0	NA
			Reasonable Care	Excavator	0	0	0	0	0	NA
			No Violation	Either	1	0	0	0	1	NA
			Non-Jurisdictional	Either	0	0	0	0	0	NA
			Unknown	Excavator	0	0	0	0	0	NA
2013	0	Dismissal	Dismissed	Either	0	0	0	0	0	NA
			Homeowner	Excavator	0	0	0	0	0	NA
			Reasonable Care	Excavator	0	0	0	0	0	NA
			No Violation	Either	0	0	0	0	0	NA
			Non-Jurisdictional	Either	0	0	0	0	0	NA
			Unknown	Excavator	0	0	0	0	0	NA
2012	1	Dismissal	Dismissed	Either	0	1	0	0	1	NA
			Homeowner	Excavator	0	0	0	0	0	NA
			Reasonable Care	Excavator	0	0	0	0	0	NA
			No Violation	Either	0	0	0	0	0	NA
			Non-Jurisdictional	Either	0	0	0	0	0	NA
			Unknown	Excavator	0	0	0	0	0	NA
2015	88	Total Non-Gas Enforcement Actions		53	20	15	0	0	88	\$37,500
2014	11	Total Non-Gas Enforcement Actions		7	3	1	0	0	11	\$5,000
2013	1	Total Non-Gas Enforcement Actions		0	0	1	0	0	1	\$500
2012	1	Total Non-Gas Enforcement Actions		0	1	0	0	0	1	\$0
Total	101	Grand Total		60	24	17	0	0	101	\$43,000
Actual Fines Collected							\$24,500			

* These statistics include Underground Damage Prevention proceedings that were successfully closed during 1st Quarter 2016 (through March 31, 2016).

101 Non Gas Investigations

\$43,000 Civil Penalties

New Hampshire Excavator Manual

- Last published March 2016
- Amendments on Puc website through September 2016
- <http://www.puc.nh.gov/Safety/educationandtraining.htm>
- Reorganized Sections
- Added Franchise Territory Maps
- Added LPG and Water Systems for Town listings
- Updated Utility Names resulting from Mergers/Acquisitions

NEW HAMPSHIRE

EXCAVATOR MANUAL



Remember to Contact



**before you
Blast, Demo, Drill or
Excavate**

What you don't know CAN hurt you

It's easy... It's free...

It's the Law

INTERNET:

www.digsafe.com

24 Hours a day, 7 days a week
NO EMERGENCY CONTACTS

PHONE:

811

888-DIG-SAFE (888-344-7233)

Monday thru Friday, 6:00 am to 6:00 pm

AFTER 6:00 PM:

EMERGENCY CALLS ONLY

New Hampshire Excavator Manual

UTILITIES BY CITY/TOWN

CITY/TOWN	TELEPHONE	CABLE	ELECTRIC	WATER	SEWER	GAS	LPG
CHICHESTER	<ul style="list-style-type: none"> FAIRPOINT TDS 	<ul style="list-style-type: none"> COMCAST 	<ul style="list-style-type: none"> PSNH UNITIL 				<ul style="list-style-type: none"> EASTERN PROPANE
CLAREMONT	<ul style="list-style-type: none"> FAIRPOINT 	<ul style="list-style-type: none"> COMCAST C/P 	<ul style="list-style-type: none"> NHEC 	<ul style="list-style-type: none"> MUNICIPAL 	<ul style="list-style-type: none"> MUNICIPAL 		<ul style="list-style-type: none"> AMERIGAS PROPANE EASTERN PROPANE SUBURBAN PROPANE YOUNG'S PROPANE
CLARKSVILLE	<ul style="list-style-type: none"> FAIRPOINT 		<ul style="list-style-type: none"> NHEC PSNH 				
COLEBROOK	<ul style="list-style-type: none"> DIXVILLE FAIRPOINT 	<ul style="list-style-type: none"> WHITE MTN 	<ul style="list-style-type: none"> NHEC PSNH 	<ul style="list-style-type: none"> MUNICIPAL 	<ul style="list-style-type: none"> MUNICIPAL 		<ul style="list-style-type: none"> RYMES
COLUMBIA	<ul style="list-style-type: none"> FAIRPOINT 	<ul style="list-style-type: none"> WHITE MTN 	<ul style="list-style-type: none"> NHEC PSNH 				
CONCORD	<ul style="list-style-type: none"> FAIRPOINT 	<ul style="list-style-type: none"> COMCAST C/P 	<ul style="list-style-type: none"> PSNH UNITIL 	<ul style="list-style-type: none"> CONCORD 	<ul style="list-style-type: none"> CONCORD 	<ul style="list-style-type: none"> LIBERTY 	<ul style="list-style-type: none"> RYMES
CONWAY	<ul style="list-style-type: none"> FAIRPOINT 	<ul style="list-style-type: none"> TIME WARNER C/P 	<ul style="list-style-type: none"> PSNH NHEC 	<ul style="list-style-type: none"> FOREST EDGE FRYEBURG LAKES REGION WATER CO. MUNICIPAL NORTH CONWAY WATER PRECINCT PENNICHUCK EAST 	<ul style="list-style-type: none"> MUNICIPAL 		<ul style="list-style-type: none"> AMERIGAS PROPANE EASTERN PROPANE RYMES

NH Puc 800 Administrative Rules

- Will complete rulemaking by November 2016, initiated in May 2016
- Areas of Review:
 - Locator Training Requirements updated 4th edition NULCA
 - 1. PUC 802.16 Definition for Tolerance zone
 - 2. PUC 803.01 (b) (6) (c) Procedures and Operation of Notification Center. The specific location language was enhanced to provide a more accurate location of the proposed excavation.
 - 3. PUC 804.01 (e) & (f) Reporting Requirements for Operators of Underground Facilities. Provides new record keeping requirements for Operators regarding existing facilities and retired facilities found during excavation and not previously recorded.

NH Puc 800 Administrative Rules

- Will complete rulemaking by November 2016, initiated in May 2016
- Areas of Review:
 - 4. PUC 805.01 (d) (4) Duties of an Excavator. Ditto 3. PUC 803.01(b) (6) (c). Also PUC 805.01 (i) For Excavations over 100 lineal feet requires the excavator to provide more complete information to the locator so the locator can more accurately locate for the excavation.
 - 5. PUC 805.02 (e) Excavation That Affects the Tolerance Zone. New language was included for excavation types that are perpendicular to the existing facilities.
 - 6. Update “operator” for telecommunications (RSA 362:7 modified in 2013)

NH Damage Prevention Items

- Began performing random field checks based on quantity tickets per town per county.
- estimating 2 days per month
- Evaluating whether number of violations found are increasing, staying steady or decreasing
- Implemented mobile tablets and RSS Feeder Application of Dig Safe System Inc

National Damage Prevention Items

- NH PUC in September completed a PHMSA Part 198 Evaluation based on federal 7 elements
- Expect an “Adequate” Rating by end of 2016
- NH will not adopt Part 196 into State Rules

NH Pipeline Safety INSPECTIONS PLANS – PLANS - PLANS

- ▣ Physical Security Plans
- ▣ Public Awareness Plans
- ▣ Operation and Maintenance Plans
- ▣ Emergency Plans
- ▣ Distribution Integrity Management Plans

NH Pipeline Safety INSPECTIONS PLANS – PLANS - PLANS

- ▣ Operator Qualification Plans
- ▣ Control Room Plans
- ▣ Integrity Management Plans
- ▣ Quality Assurance Plans
- ▣ Damage Prevention Plans
- ▣ Construction Plans
- ▣ Drug and Alcohol Plans

And there is more coming.....

THANK YOU FOR YOUR EFFORTS TOWARDS PIPELINE SAFETY

- Zero Incidents is Achievable