


**LEGEND:**

316 LINE: 

316 STR: 

DWG REV	EPN/DESCRIPTION	CONT/PE#	DATE	DRN	CHKD	APPR
1	ISSUED TO PUC WO#DL9R1215		4/22/21	CTS	JRS	DSD

**EVERSOURCE ENERGY**

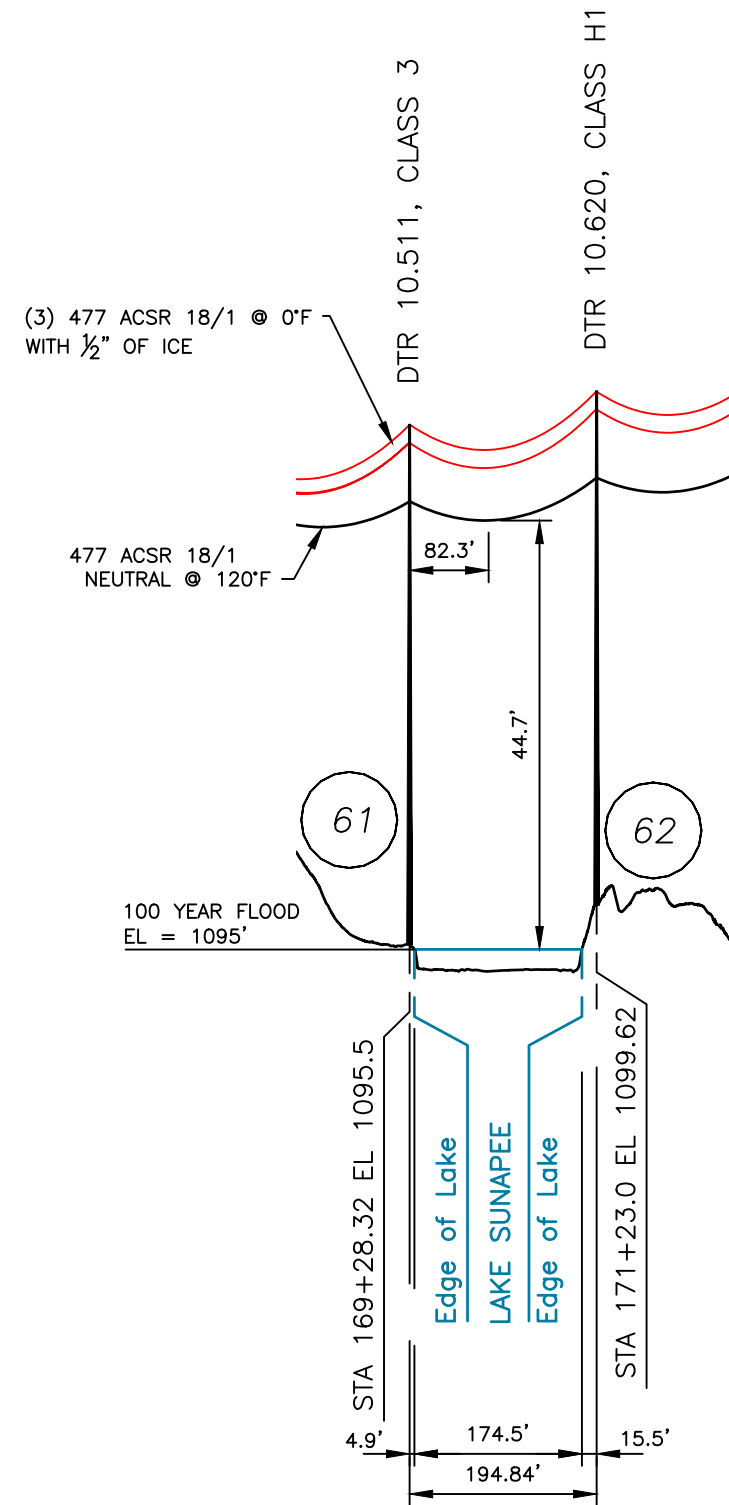
316 34.5kV LINE  
SUNAPEE LAKE, LOCATION PLAN  
SUNAPEE, NEW HAMPSHIRE  
EXHIBIT 1

D	1
DRAWN	CTS
ENGINEER	DSD
CHECKED	JRS
APPROVED	DSD
DATE	04/22/21

SCALE  
1" = 1500'

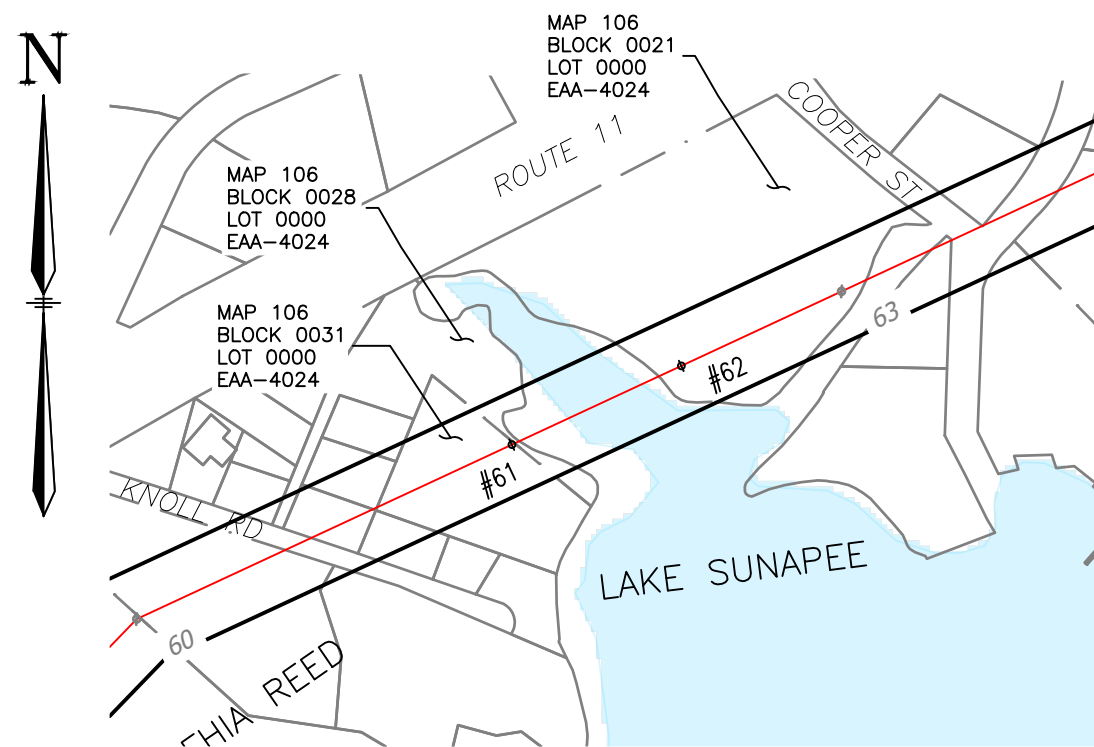
FILE: 031644901.DWG  
IMAGE:

DRAWING NO.  
031644901



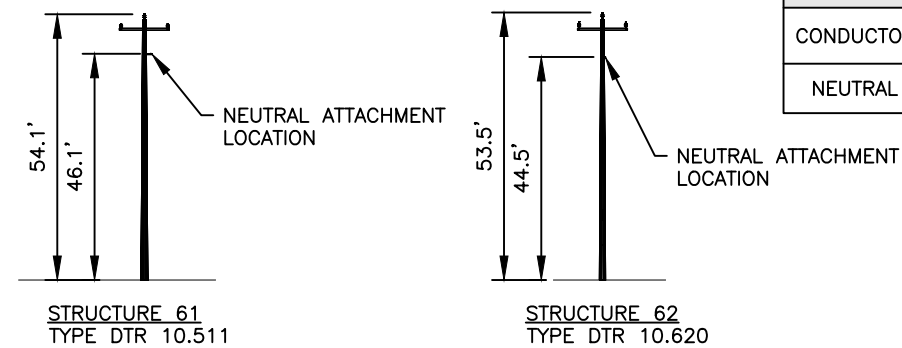
**PROFILE VIEW**

SCALE: HORZ 1" = 200'  
VERT 1" = 20'



**PLAN VIEW**

SCALE: 1" = 200'



STR 61: IS AN EVERSOURCE TANGENT TYPE, SINGLE CIRCUIT WOOD POLE, HORIZONTAL CONFIG.

STR 62: IS AN EVERSOURCE TANGENT TYPE, SINGLE CIRCUIT STEEL POLE, HORIZONTAL CONFIG.

**STRUCTURE DETAIL**

SCALE: NTS

**LEGEND:**

- #61 STRUCTURE (WITH GUYS)
- PROPERTY BOUNDARY
- 316 LINE 34.5KV LINE, C<sub>E</sub> OF CONSTRUCTION
- LIMITS OF EVERSOURCE RIGHT OF WAY

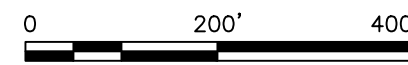
STRUCTURE LOCATION		
STRUCTURE	LONGITUDE	LATITUDE
61	-72.06851968	43.43015957
62	-72.06785499	43.43038456

NESC VERTICAL CLEARANCE (FT) FROM TABLE 232.1, C2-2012	
NATURE OF SURFACE UNDERNEATH WIRES, CONDUCTORS OR CABLES	NEUTRAL
WATER AREAS SUITABLE FOR SAIL BOATING INCLUDING LAKES, PONDS, RESERVOIRS, TIDAL WATERS, RIVERS, STREAMS, AND CANALS WITH AN UNOBSTRUCTED SURFACE AREA OF OVER 2000 ACRES	37.5

CABLE SCHEDULE						
WIRE	QTY OF CABLES	DESCRIPTION	DESIGN CONDITIONS			
			MAX DESIGN TENSION (lb)	TEMP (°F)	ICE (in)	WIND (psf)
CONDUCTOR	3	ACSR, 477 kcmil 1 $\frac{1}{8}$ "	3000	0	0.5	4
NEUTRAL	1	ACSR, 477 kcmil 1 $\frac{1}{8}$ "	3000	0	0.5	4

**NOTES:**

- PARCEL INFORMATION PROVIDED BY NH GRANIT.
- ELEVATIONS REFERENCED TO THE NORTH AMERICAN VERTICAL DATUM OF 1988.
- FLOOD ELEVATION FROM THE FEMA FLOOD MAP SERVICE CENTER, NATIONAL FLOOD HAZARD LAYER FIRMETTE, 03/29/2021.



DWG REV	ISSUED TO PUC WO#DL9R1215	CONT/PE#	DATE	DRN	CHKD	APPR
1			4/22/21	CTS	JRS	DSD

EVERSOURCE ENERGY

316 34.5kV LINE  
SUNAPEE LAKE, PUBLIC WATER CROSSING  
SUNAPEE, NEW HAMPSHIRE  
EXHIBIT 2

SCALE AS SHOWN	DRAWING NO. <b>031644901</b>
-------------------	---------------------------------